

MAKING
WORK FEEL
MORE LIKE
PLAY



WALLENSTEIN

INTRODUCING

FIREBOLT

THE ALL NEW **2x2** SPEED LOG SPLITTER

**FASTER
AND
STRONGER**



**30%
FASTER**
VS PREVIOUS WX640

11 SEC
FULL CYCLE

**FACTORY
TUNED**

**TO RATED
PERFORMANCE**

27 TONS
**SPLITTING
FORCE**
3400 PSI

See Page 30



**TIMBER
TALON**

LXG SERIES LOG GRAPPLES



**3 Point Hitch
Skidsteer
Mini Skidsteer**

See Page 69



NEW



AC34

3" Chipper

**POWERED by
HONDA**

See Page 20

Table of Contents



Wood Chippers 5



Log Splitters 23



Firewood Processors. 39



Skidding Winches & Plates 51



Log Loaders & Grapples 57



Manure Spreaders 75



Backhoes 85



Generators. 96



Work Worry-Free with Wallenstein

You work hard and we've got you covered worry-free with a 5 Year Consumer Warranty that comes with every new Wallenstein product.

For full details visit wallensteinequipment.com.

Online Product Registration

To access Wallenstein's 5-year product warranty, consumers must complete the online product registration within 30 days of purchase.

To register your new Wallenstein product, visit our website at wallensteinequipment.com.

Quality Products, Built in Canada

Manufactured and assembled in Canada, Wallenstein's quality manufacturing process ensures the highest quality products. The result is heavy duty equipment, built to handle all your outdoor jobs year after year.

Wallenstein has partnered with the industry's best engine manufacturers to ensure your Wallenstein product continues to run smoothly for its entire life.



POWERED by
HONDA™

Kubota

KOHLER®



WALLENSTEIN PRODUCTS,
PARTS AND SERVICE
ARE SUPPORTED BY OUR
WORLD-WIDE AUTHORIZED
DEALER NETWORK .



BX102S

WALLENSTEIN
FORESTRY

BX
BXM

CHIPPERS & CHIPPER / SHREDDERS

TRAILER
3-POINT HITCH
SKIDSTEER
CART



POWERED by
HONDA™

THE BENEFITS REALLY PILE UP.

When it's time to clean up, Wallenstein BX Wood Chippers and Wallenstein BXM Chipper / Shredders make quick work, turning waste into valuable chips and mulch.

RESOURCEFUL & TIDY

CHIPPERS / SHREDDERS

CHIPS AND MULCH

A BEAUTIFUL RESOURCE

Turn branches and leaves into a valuable resource that's perfect for pathways and flowerbeds with a Wallenstein BX Chipper or BXM Chipper / Shredder.

Chipping is your best method of reducing large, awkward branches to a fraction of their size, making handling easy and creating a useful ground cover that helps control weeds and retain moisture in hot weather. Leaf and twig cleanup is also simple with the BXM Chipper / Shredder, creating a fine mulch that adds that special finishing touch to your perfectly manicured flowerbeds.



PROMOTES...



NITROGEN RELEASE

Chips and mulch increase the rate of decomposition, adding nitrogen into the soil for improved plant growth



SOIL TEMPERATURE

During the day, ground-cover protects the soil from too much heat. At night, it insulates, reducing plant stress.



MOISTURE RETENTION

Ground cover reduces evaporation of valuable moisture by blocking direct sunlight to the surface of the soil.

PREVENTS...



DROUGHT

Wood chips create a barrier, conserving soil moisture and moderating soil temperature.



MOLD

Use of whole leaves form a soggy mat that impede new growth of plants and lawn grass and promote fungal growth.



WEED CONTROL

Use mulch or chips to suppress the growth of weeds.

PROTECT | ADVANCE | MODERATE | ENHANCE

BEAUTY AND CONVENIENCE

The final accent of precisely edged flowerbeds painted with your favourite blooms is the palate of wood chips and mulch that defines green lawn from flowerbed. Wallenstein Chippers and Chipper / Shredders give you the tool to make beautiful chips and mulch for your own gardens without the need to annually buy mulch and pay for delivery. With a Wallenstein, you can chip and shred right where you need it, saving, literally, wheelbarrow loads of work.

CLEAN UP & REMOVAL

For woodlot owners, arborists and municipalities, Wallenstein means disposing of brush piles easily, creating ground cover that's ideal for pathways, flowerbeds or improving the composting process.



CHIPPERS / SHREDDERS

WOOD CHIPS, MULCH AND YOUR GARDEN

NITROGEN



Together, leaves, bark and branches stagger the release of nitrogen back into the soil.

DECOMPOSITION



As the chips break down, heat is released, moderating soil temperature.

MOISTURE RETENTION

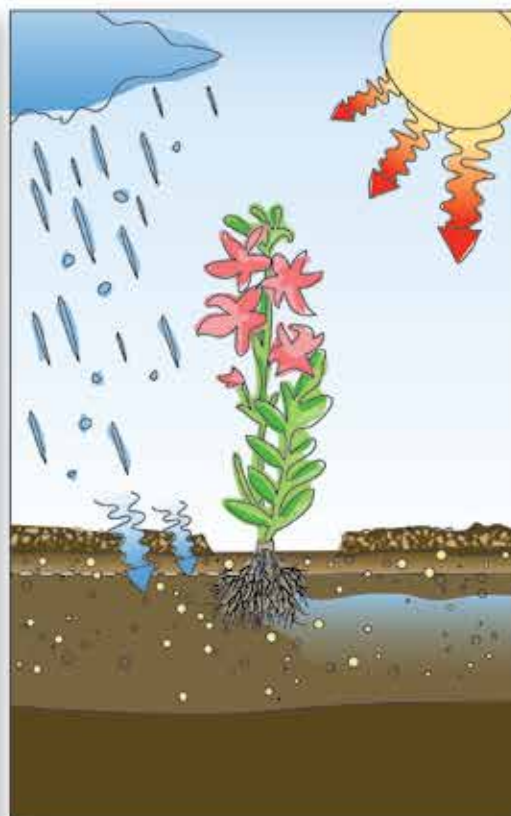
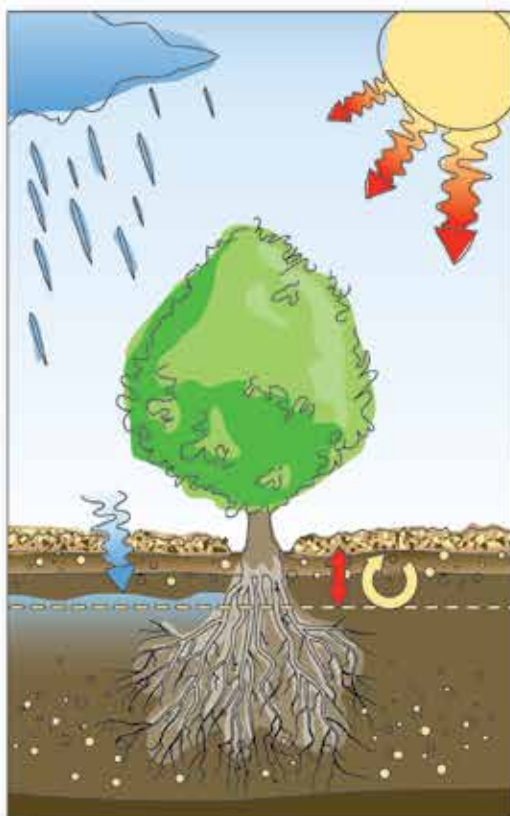


Chips absorb moisture and slow evaporation, keeping more water for plants.

HEAT DEFLECTION



Chips act as a diffuser and protective barrier against high heat.



WHY WALLENSTEIN?

CHIPPERS / SHREDDERS



Cedar mulch shown

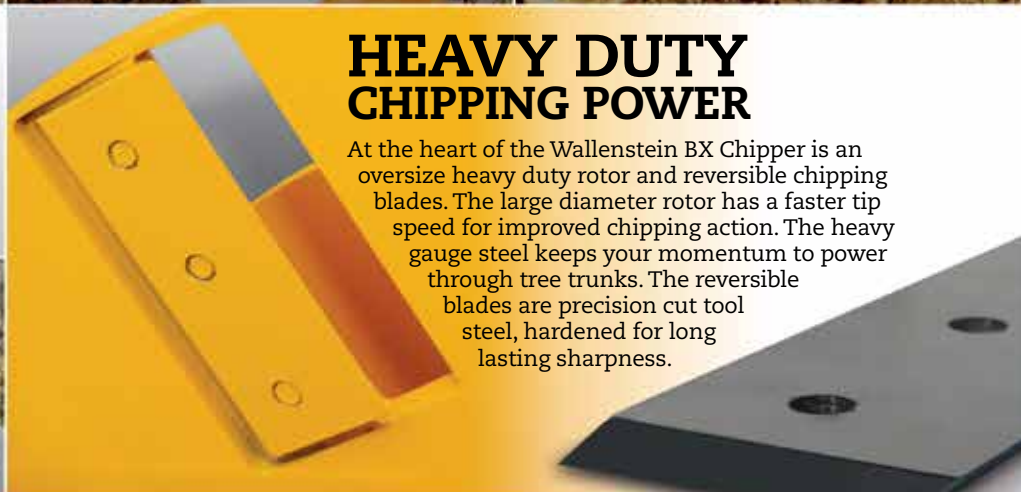


Turn waste brush, branches and bark into valuable chips with the BX series of Wood Chippers. For finely mulched leaves and branches, as well, the BXM Chipper / Shredder series is right for you.



ADJUSTABLE EXIT CHUTE

Easily control where you want your chips or mulch with the double adjustable Exit Chute. The chute swivels and the top deflector adjusts the distance.



HEAVY DUTY CHIPPING POWER

At the heart of the Wallenstein BX Chipper is an oversize heavy duty rotor and reversible chipping blades. The large diameter rotor has a faster tip speed for improved chipping action. The heavy gauge steel keeps your momentum to power through tree trunks. The reversible blades are precision cut tool steel, hardened for long lasting sharpness.

MATCH YOUR STYLE



Actual colors may vary.

ENGINE PERFORMANCE

The BX Series of Wood Chippers and BXM Series of Chipper / Shredders are available in various engine sizes to suit your horsepower requirements. Powered by Honda or Kohler, Wallenstein uses only the most reliable engines to power its line of chippers and chipper / shredders.

POWERED by
HONDA

KOHLER



**WORK
WORRY-
FREE WITH
WALLENSTEIN**

You work hard and we've got you covered worry-free with a 5 Year Consumer Warranty that comes with every new Wallenstein product.

For details, visit:
wallensteinequipment.com.

SPEED | POWER | VERSATILITY | RELIABILITY

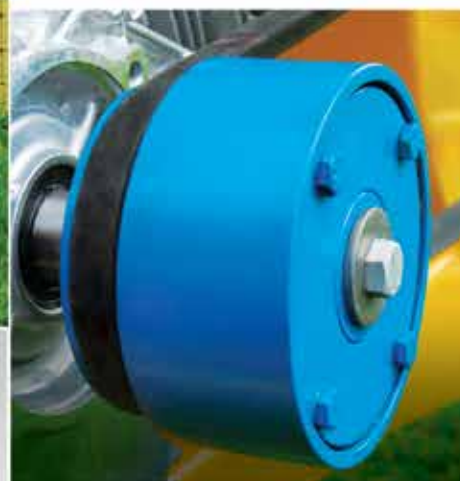


BXM42

SELF FEEDING INTAKE HOPPERS

The over-sized chipping hopper is precisely angled to self-feed, reducing the need to limb branches before processing.

The top shredding hopper on the BXM models is tall and wide to easily put branches, leaves and bark in while keeping you safe.



CENTRIFUGAL CLUTCH

The centrifugal clutch on engine powered trailer units allows for easy starts and promotes longevity, low maintenance and ease of use. There's no complicated starting system or extra pulleys.



NO MESS SHREDDING

Shredded material uses the same exit chute as the wood chips, making clean-up quick and easy with less handling.



CHOP BLOCK

For shredding, the BXM revolutionizes the whole way you've come to expect finely mulched ground cover, with three sets of cutting knives and the exclusive CHOP-Block.

The CHOP-Block works like an anvil, trapping material and forcing it to be shredded more precisely for consistent cut, clean-out and delivery through the exit chute.

Unlike conventional shredders, the BXM has no screens which greatly reduces clogging, even with wet material.



WELDED CONSTRUCTION

Welded construction improves durability and minimizes "bolt-on" parts, including the full frame base.



BX52S

BXS 3PH SELF-FEED

Directly connected to your tractor's PTO, power is transferred straight into chipping / shredding. The self-feed hopper automatically pulls the branches in as it chips.



BX32 STANDARD FEATURES

360° Exit Chute

Self Feeding Chipper Hopper

Hardened Tool Steel Reversible Chipping Blades

Cat I 3-Point Hitch Mount, iMatch™ & quick hitch compatible

PTO Drive train, shear bolt protected



BX 32s

3"

- 3" Diameter Capacity
- 12-30 HP Range
- 25-30 HP Required for Max. Capacity
- 3" x 6" Chipper Housing Opening
- 17.5" Rotor with 2 Offset Knives at 45 lbs.
- Dimensions (LxWxH) 54" x 36" x 60"
- 58" Discharge Hood Height
- 320 lbs. Total Weight
- PTO Height: 10.72"

BX 32s

Quick Hitch and iMatch systems may require longer PTO shafts for optimum and safe performance, replacements are not available from Wallenstein and must be made at the customers expense. iMatch systems require adaptor bushings not available from Wallenstein and must be purchased at the customers expense.

Wallenstein 2017 Product Catalogue



BX72S



BX52/72/102 STANDARD FEATURES

Adjustable Dual
Handle Exit
Chute

Adjustable Height
Ski Base
(BX52S Only)

Oversized
Diameter
Chipping Rotor

Fold Up Feed
Hopper - No Tools

Bearing Plate
Protection

OPTIONAL FEATURES

30" Discharge Height
Extension (BX72S, BX102S)

See chipper options for details on page 22



BX 52s

5"

- 5" Diameter Capacity
- 18-50 HP Range
- 40-45 HP Required for Max Capacity
- 5" x 10" Chipper Housing Opening
- 24.75" Rotor with 4 Knives at 125 lbs.
- Dimensions (LxWxH) 43" x 55" x 66"
- 66" Discharge Hood Height, 270° rotation
- 505 lbs. Total Weight
- Base Adjusts PTO Height: 13.4" to 19.0"

BX 52s



BX 72s

7"

- 7" Diameter Capacity
- 35-100 HP Range
- 65-75 HP Required for Max Capacity
- 7" x 12" Chipper Housing Opening
- 28" Rotor with 4 Knives at 175 lbs.
- Dimensions (LxWxH) 64" x 70" x 82"
- 82" Discharge Hood Height, 270° rotation
- 728 lbs. (est) Total Weight
- PTO Height: 19.0"

BX 72s



BX 102s

10"

- 10" Diameter Capacity
- 65-150 HP Range
- 90-120 HP Required for Max Capacity
- 10" x 15" Chipper Housing Opening
- 36" Rotor with 4 Knives at 400 lbs.
- Dimensions (LxWxH) 71" x 71" x 89"
- 89" Discharge Hood Height, 270° rotation
- 1143 lbs. (est) Total Weight
- PTO Height: 23.0"

BX 102s

Quik Hitch and iMatch systems may require longer PTO shafts for optimum and safe performance, replacements are not available from Wallenstein and must be made at the customers expense.
iMatch systems require adapter bushings not available from Wallenstein and must be purchased at the customers expense.



BX52R

BXR

3PH HYDRAULIC ROLLER FEED

With a PTO powered rotor and hydraulic feed hopper, branches, limbs and brush are control fed for continuous chipping at maximum capacity.

Wallenstein uses Pioneer style ball type hydraulic couplings for all tractor auxiliary connections. Substitutions are not available from Wallenstein and must be made at the customers expense.



STANDARD FEATURES

Adjustable
Chute

Oversized Heavy
Duty Rotor

Hardened Tool
Reversible Chipper
Blades

Slab style
opening

Bearing
Protection Plate



BX 52R

5"

- 5" Diameter Capacity
- 18-50 HP Range
- 40-45 HP Required for Max. Capacity (BX52R)
- 30-45 HP Required for Max. Capacity (BX52RI)
- 5" x 10" Chipper Housing Opening
- 24.75" Rotor with 4 Knives at 125 lbs.
- Dimensions (LxWxH) 62" x 61" x 74"
- 74" Discharge Hood Height, 270° rotation

BX 52RI: Includes Intellifeed

- 845 lbs. Total Weight
- 3 Point Hitch Cat I (iMatch & Quick Hitch compatible)
- Base Adjusts PTO Height: 21.5" to 27.0"
- requires 3-6 gpm
- Optional Hydraulic Power Pack (Part #C3540)

BX 52R

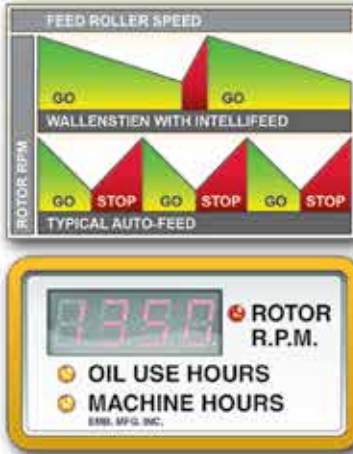
BX 52RI

Quick Hitch and iMatch systems may require longer PTO shafts for optimum and safe performance, replacements are not available from Wallenstein and must be made at the customers expense. iMatch systems require adapter bushings not available from Wallenstein and must be purchased at the customers expense.

Wallenstein 2017 Product Catalogue

INTELLIFEED

ELECTRONIC CONTROL SYSTEM



The optional fully programmable, IntelliFeed monitors the rotor's rpm, slowing the rollers' speed as needed. IntelliFeed continues the chipping at a volume that best matches its rpm.



BX102R



OPTIONAL

See details on page 22

Easy start tension relief

Dual active rollers
Spiral Style Roller
(BX72 & BX102R)

Safety control bar

30" Chute Extension
(All BX72R + BX102R)

Biomass Insert.
Fine chips for biomass furnace.
(All BX72R + BX102R)

Top roller hydraulic lift with 1800 lbs crush force (102RP/RPI)

Hydraulic winch with 1200 lbs pull force (102RP/RPI)



BX 72R

- 7" Diameter Capacity (Max 12" slab)
- 40-100 HP Range
- 60-70 HP Required for Max. Capacity
- 7" x 12" Chipper Housing Opening
- 28" Rotor with 4 Knives at 185 lbs.
- Dimensions (LxWxH) 83" x 56" x 90"
- 90" Discharge Hood Height
- 1300 lbs. Total Weight
- Optional Hydraulic Power Pack (Part #C3540)

BX 72RI: Includes IntelliFeed

7"

BX 102R



10"

- 65-150 HP Range
- 90-120 HP Required for Max. Capacity
- 10" x 17" W Chipper Housing Opening
- 10" Diameter Capacity (Max 17" Slab)
- 36" Rotor with 4 Knives at 425 lbs.
- Dimensions (LxWxH) 108" x 87" x 100" Open

BX 102RI: Includes IntelliFeed

BX 102RP: Includes Hydraulic Winch and Top Roller Hydraulic Lift

BX 102RPI: Includes IntelliFeed, Hydraulic Winch and Top Roller Hydraulic Lift

- 2000 lbs. Total Weight
- Optional Hydraulic Power Pack (Part# C4550)
- PTO Height 34.0"
- requires 4-8 gpm
- * 3PH Category II

BX 72R

BX 72RI

BX 102R

BX 102RI

BX 102RP

BX 102RPI



BXM

BXM32

CHIPPER / SHREDDERS 3-POINT HITCH/PTO

Directly connected to your tractor's PTO, power is transferred straight into chipping / shredding action - quickly turning limbs, branches or debris up to 4" in diameter into valuable chips or mulch.



STANDARD FEATURES

Includes Chipping Features of BX Series

Exclusive Chop Block uses an anvil action to finely process material

Chipper & Shredder use the same 360° exit chute



BXM 32

3"

- 12-35 HP Range
- 25-30 HP Required for Max. Capacity
- 3" x 6" Chipper Housing Opening with 3" Capacity
- 10" x 10" Shredder Housing Opening with 1" Capacity
- 17.5" Chipper Rotor with 2 Offset Knives at 70 lbs.
- 27 Shredder Knives
- Dimensions (LxWxH) 54" x 36" x 60"
- 445 lbs. Total Weight
- PTO Height: 10.7"

BXM 32

* Cat I 3PH mount, iMatch™ & quick hitch compatible



BXM 42

4"

- 30-90 HP Range
- 35-50 HP Required for Max. Capacity
- 4" x 10" Chipper Housing Opening with 4" Capacity
- 10.5" x 10.5" Shredder Housing Opening with 2" Capacity
- 25" Chipper Rotor with 2 Knives at 170 lbs.
- 30 Shredder Knives
- Dimensions (LxWxH) 72" x 44" x 62"
- 800 lbs. Total Weight
- PTO Height: 27.0"

BXM 42

* Cat I 3PH mount, iMatch™ & quick hitch compatible



BXH42

BXH CHIPPER SKIDSTEER

Get the most out of your equipment with the practical BXH 42 Skidsteer Mounted Wood Chipper. The hydraulically driven BXH 42 is powered directly from the skidsteer's external ports, providing plenty of chipping action.



STANDARD FEATURES

360° Exit Chute for accurate chip placement

Chipper Driven by Skidsteer Hydraulics

Self Feeding Chipper Hopper

Hardened Tool Steel Reversible Chipping Blades

Chipping Rotor Rated 1000 RPM @25gpm



SKIDSTEER - The skidsteer mount makes the BXH 42 easy to attach so you can switch from a bucket to chipper quickly and easily.



The BXH 42 is capable of chipping 4-inch diameter logs with its heavy-duty rotor and 2 hardened tool steel reversible cutting blades.

BXH 42

4"

- 4" Diameter Capacity (Max. 10" Slab)
- Hydraulically powered
- 4" x 10" Chipper Housing Opening
- 25" Rotor with 2 Knives at 74 lbs.
- 65" Discharge Hood Height
- 740 lbs. Total Weight
- Dimensions (LxWxH) 80" x 57" x 72"
- 25gpm recommended flow
- 20-30gpm flow range

BXH 42



BXMT3209

BXMT CHIPPER / SHREDDERS

Pick up and go wherever you need it. Ideal for keeping job sites clean and tidy, Contractors, Arborists and Municipalities can easily chip or mulch branches into vehicles and haul them away with the trailer style BXMT Chipper / Shredders or BXT Chippers.

CHOP BLOCK



SHREDDER EXCLUSIVE FEATURES

Exclusive Chop Block uses an anvil action to finely process material



Chipper & Shredder use the same 360° exit chute



STANDARD FEATURES

Highway Travel for the BXMT with Signal Lights



Torflex® Suspension Axles for Smooth Trailing
*Not available on BXMT3209



POWERED by
HONDA



POWERED by
HONDA



POWERED by
HONDA



KOHLER

BXMT 3209

3"

- 270 CC Honda GX 270 Engine
- 3" x 6" Chipper Housing Opening with 3" Cap.
- 10" x 10" Shredder Housing Opening with 1" Cap.
- 17.5" Chipper Rotor with 2 Offset Knives at 70 lbs.
- 27 Shredder Knives
- Dimensions (LxWxH) 58" x 44" x 56"
- 400 lbs. Total Weight
- 4.10 x 6 Tire Size

BXMT 3209

BXMT 3213

3"

- 389 CC Honda GX 390 Engine
- 3" x 6" Chipper Housing Opening with 3" Cap.
- 10" x 10" Shredder Housing Opening with 1" Cap.
- 17.5" Chipper Rotor with 2 Offset Knives at 70 lbs.
- 27 Shredder Knives
- Dimensions (LxWxH) 60" x 44" x 58"
- 520 lbs. Total Weight
- 4.80 x 8 Tire Size

BXMT 3213

3"

BXMT 4224

- 670 CC Honda GX 670 Engine
- 4" x 10" Chipper Housing Opening with 4" Cap.
- 10.5" x 10.5" Shredder Housing Opening with 2" Cap.
- 30 Shredder Knives - 25" Chipper Rotor with 2 Knives at 170 lbs.
- Dimensions (LxWxH) 84" x 64" x 64"
- 1080 lbs. Total Weight
- 6.50 x 8 Tire Size
- Built-in Tool Box

BXMT 4224

4"

BXMT 4238

- 999 CC Kohler Engine
- 4" x 10" Chipper Housing Opening with 4" Cap.
- 10.5" x 10.5" Shredder Housing Opening with 2" Cap.
- 30 Shredder Knives - 25" Chipper Rotor with 2 Knives at 170 lbs.
- Dimensions (LxWxH) 84" x 64" x 64"
- 1080 lbs. Total Weight
- 6.50 x 8 Tire Size
- Built-in Tool Box

BXMT 4238

4"



BXT CHIPPERS



STANDARD FEATURES

Oversized Diameter
Chipping Rotor

360° Exit
Chute

Belt Drive

Centrifugal Clutch for
easy 1 step start-up

Electric Start

Self Feeding
Chipper Hopper

Hardened Tool Steel
Reversible Chipping
Blades



POWERED by
HONDA



POWERED by
HONDA



POWERED by
HONDA



KOHLER

BXT 4213

4"

- 389 CC Honda **GX 390** Engine
- 4" x 10" Chipper Housing Opening with 4" Diameter Cap
- 25" Rotor with 2 Knives at 74 lbs.
- Dimensions (LxWxH) 72" x 59" x 72"
- 72" Discharge Hood Height
- 785 lbs. Total Weight
- 4.80 x 8 Tire Size
- Built-in Tool Box

BXT 4213

BXT 4224

4"

- 670 CC Honda **GX 670** Engine
- 4" x 10" Chipper Housing Opening with 4" Diameter Cap
- 25" Rotor with 2 Knives at 74 lbs.
- Dimensions (LxWxH) 72" x 59" x 72"
- 72" Discharge Hood Height
- 825 lbs. Total Weight
- 4.80 x 8 Tire Size
- Built-in Tool Box

BXT 4224

BXT 6224

6"

- 670 CC Honda **GX 670** Engine
- 6.5" x 12" Chipper Housing Opening with 6" Diameter Cap
- 30" Rotor with 2 Knives at 197 lbs.
- Dimensions (LxWxH) 86" x 75" x 88"
- 88" Discharge Hood Height
- 1365 lbs. Total Weight
- 20.50 x 8-10 Tire Size
- Built-in Tool Box

BXT 6224

BXT 6238

6"

- 999 CC Kohler **CH 980** Engine
- 6.5" x 12" Chipper Housing Opening with 6" Diameter Cap
- 30" Rotor with 2 Knives at 197 lbs.
- Dimensions (LxWxH) 86" x 75" x 88"
- 88" Discharge Hood Height
- 1385 lbs. Total Weight
- 20.50 x 8-10 Tire Size
- Built-in Tool Box

BXT 6238



BXTR

HYDRAULIC ROLLER FEED TRAILER

POWERFUL PRODUCTIVITY

INDUSTRIAL STRENGTH, DURABILITY & SERVICEABILITY

The Wallenstein BXTR6438F is a commercial chipper with a big appetite, but never bites off more than it can chew. That's because the BXTR6438 series features the newest innovations in contractor and rental-grade chippers that keep you productive. With more standard features, engineering that maximizes power and easy operator controls, the Wallenstein BXTR6438 series makes a meal out of almost anything.



STANDARD FEATURES



Torflex® Suspension Axle, Highway Tires



Brake and L/R Turn Signal Lights



360° Swivel And Angle Control Chute



Built-in Storage Box

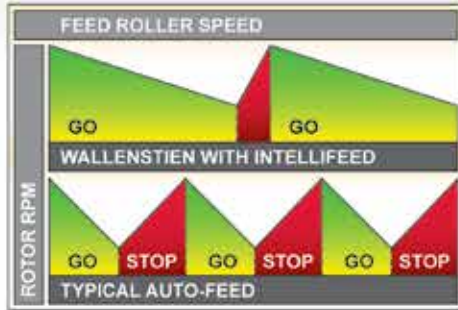


Adjustable Hitch

INTELLIFEED

ELECTRONIC CONTROL SYSTEM

Fully programmable, IntelliFeed monitors the rotor's rpm, slowing the rollers' speed as needed. IntelliFeed continues the chipping at a volume that best matches its rpm.



RAPID RECOVERY AUTO REVERSE

If the BXTR's rpm reaches its minimum setting, Wallenstein's Rapid Recovery technology takes over, automatically reversing the log away from the rotor. Rapid Recovery eliminates friction against the rotor, allowing the rotor to increase rpm's faster.



7" X 11" Opening

The extra wide chipper opening easily feeds awkward branches and logs with less limbing before chipping.



SAFETY/CONTROL BAR

The Safety Control Bar provides forward/reverse control and two stop positions. Stop the feed rollers when the bar is pushed in or pulled out, providing another level of safety that keeps the operator out of harm's way.



ANGLED ROTOR

Angling the log against the rotor requires less horsepower to chip, saving fuel.

BXTR 6438F/6438P

7"

- 999 CC Kohler Engine
- 7"H x 11"W Chipper Housing Opening
- 7" Diameter Capacity (Max 11" Slab)
- 25" x 34" Chipper Hopper Opening
- 30" Chipper Rotor with 4 Knives at 197 lbs.
- Electronic Feed Sensor, Hydraulic Feed Controller Unit
- Dimensions (LxWxH): 148.5" x 64" x 100"
- Weight 2225 lbs.
- Highway Tire Size ST205/75R14
- Built-in Tool Box
- Electric Brakes (BXTR 6438P)
- Auto Engage Fluid Coupler
- Meets 2013 WorkSafeBC safety standards

BXTR 6438F

BXTR 6438P

STANDARD FEATURES



Lift assist for servicing using gas shocks.



Hydraulically driven dual active rollers



KOHLER
999 CC Kohler Engine



Electric brakes eliminate extra load on vehicle 6438P only



Auto engage fluid coupler is ideal for contractors where heavy duty work is required



BXC34

BXC

CHIPPERS HAND CART

Powered by Honda, the BXC 34 hand cart chipper is great for small property owners. Lightweight and portable, easily take it wherever you need to make quick work of branches up to 3" in diameter.



POWERED by
HONDA™

STANDARD FEATURES

Blower Discharge
with Positional
Deflector

Honda Engine

Rubber Tires

5 Second Stop
Brake Clutch

OPTIONAL

Mulch
Collector Bag
28L Capacity (2.7 cu.ft.)

Trailer Hitch

See for details on page 22



BXC 34

3"

- 200CC GX200 Honda Engine
- 4" x 4.25" Feed Opening with 3" Cap.
- 18" x 18" Hopper Opening
- 17" Chipper Rotor with 2 Offset Knives
- Blower Discharge with Positional Deflector
- Dimensions (LxWxH) 33.5" x 68.75" x 43.75"
- 213 lbs. Total Weight
- 4.10 x 3.5 Tire Size, Rubber Tire

BXC 34



BXMC

BXMC34S

CHIPPER / SHREDDERS HAND CART

Lightweight and portable, the BXMC is ideal for the small rural property. Powered by Honda, it makes quick work of branches, brush and leaves.



POWERED by HONDA™

STANDARD FEATURES

5 Second Stop Brake Clutch

Honda Engine

Exclusive Chop Block uses an anvil action to finely process material

Rubber Tires

OPTIONAL FEATURES

Blower Discharge Bag

Trailer Hitch

See for details on page 22



BXMC 34S

3"

- 200CC GX200 Honda Engine
- 3.5" x 5" Chipper Housing Opening with 3" Cap.
- 6" x 7" Shredder Housing Opening with 3/4" Cap.
- 14" Chipper Rotor with 2 Offset Knives at 28 lbs.
- 8 Shredding Knives
- Screen Discharge with 1.5" Screen Included, Options Available
- Dimensions (LxWxH) 43" x 37" x 47"
- 250 lbs. Total Weight
- 4.10 x 3.5 Tire Size, Rubber Tire

BXMC 34S



BXMC 34B

3"

- 200CC GX200 Honda Engine
- 3.5" x 5" Chipper Housing Opening with 3" Cap.
- 6" x 7" Shredder Housing Opening with 3/4" Cap.
- 16" Chipper Rotor with 2 Offset Knives at 40 lbs.
- 12 Shredding Knives
- Blower Discharge
- Dimensions (LxWxH) 43" x 40" x 49"
- 270 lbs. Total Weight
- 4.10 x 3.5 Tire Size, Rubber Tire

BXMC 34B

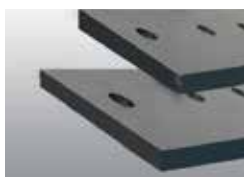
Chipper Options

Reversible Rotor knife



Part#	Description
1056M303	• BX32S, BXC34, BXM32, BXMT3213, BXMT3209, BXMT3214SU, BXM34B, BXM34S, BXM32S, BXM32B, BXC32, BXC32H
1011M103	• BX42S, BXT4213, BXT4224, BXM42, BXM42, BXT4214SU, BXT4228SU, BX52 Series
1012M203	• BX62S, BX72S
1019M903	• BX92S, BX102 Series
1053M303	• BXTR6438F, BXT6224, BXT6228SU, BXT6238, BX72R

Ledger Knife



Part#	Description
1056M304	• BX32S, BXM32, BXMT3213, BXC34, BXC32, BXC32H, BXMT3209, BXMT3214SU, BXM34B, BXM34S, BXM32S, BXM32B
1011M104	• BX42S, BXT4213, BXT4224, BX42R, BXM42, BXH42, BXT4214SU, BXT4228SU, BXM4224, BXT4228SU, BX52 Series
1012M204	• BX62S, BXT6224, BXT6238, BX72 Series, BXT6228SU, BXTR6438 Series
1019M904	• BX92, BX102 Series

Shredder Knife



Part#	Description
1056M108	• BXM32, BXMT32, BXM32S, BXM34S, BXM32B, BXM34B, BXM32SH, BXM32BH
1016M608	• BXM42, BXMT4224

Screens



Part#	Description
1071L240	• 0.75" Round Screen • BXM34S, BXM32S
1074L250	• 1.5" Round Screen • BXM34S, BXM32S
1074L260	• 1.5" Wet Screen • BXM34S, BXM32S

Trailer Hitch



Part#	Description
1082A355	• BXM34B, BXM32B, BXM34S, BXM32S, BXC34, BXC32, BXC32H

Mulch Collector Bag



Part#	Description
Z99006	• BXM34B, BXM34S, BXC34, BXM32BH, BXM32B, BXC32, BXC32H

Ledger Knife Clearance Gauge

Part#	Description
1012L269	• for use on all Chippers

Electric Brake Kit

Part#	Description
C300	• standard on BXTR6438P

Self-Contained PTO Power Pack

Part#	Description
C3540	• BX52R, BX72R
C4550	• BX102R

Colour Options



When ordering, please use 3 letter colour designation behind models

Biomass Kit



Part#	Description
CBM100	• BX72R, BX72RI
CBM200	• BX102R, BX102RI, BX102RP, BX102RPI

*1000 RPM Recommended PTO Speed

30" Discharge Height Extension



Part#	Description
CHE100	• All BX72R, BX72S, BX102R + BX102S Models

*Available in black only, not recommended with Biomass Kit

Biomass kits must operate at 1000 RPM PTO speed.

Optional PTO shafts for tractors using 21 Spline PTO at 1000 RPM.

PTO Shafts

Part#	Description
Z44506	• PTO Shaft -series B5 x 55-1/4" x 21 Spline
Z44803	• PTO Shaft -series B8 x 40" x 21 Spline

**FASTER
AND
STRONGER**



WXR740

WALLENSTEIN
FORESTRY

W
X
W
E

LOG SPLITTERS

TRAILER

3-POINT HITCH

SKIDSTEER



POWERED by
HONDA™

FIREBULT
2x2 SPEED LOG SPLITTER

WHY WALLENSTEIN?

WIDE WEDGE

The wide wedge splits the log using minimal distance, reducing cycle time requirements.

LOG SPLITTERS



DIRECT PRESSURE

Full splitting force is always applied because the cylinder is directly inline with the log, powering through the toughest wood with ease.

WORK WORRY-FREE WITH WALLENSTEIN

You work hard and we've got you covered worry-free with a 5 Year Consumer Warranty that comes with every new Wallenstein product.



CYCLE TIME

FULL STROKE CYCLE TIME

Full stroke cycle time is the amount of time it takes for the splitting wedge to travel the full cylinder length from the start position to the anvil and back to start.

AVERAGE SPLITTING CYCLE TIME

Average splitting cycle time is the average amount of time it takes for the splitting wedge to fully split a log, setup the next piece and begin splitting again.

The average splitting cycle time is based on straight grain logs. The average splitting cycle time will increase when processing stringy or cross-grain logs.

SPEED | POWER | VERSATILITY | RELIABILITY



HANDS FREE RETURN - AUTO NEUTRAL

Switched to reverse, the splitting wedge returns to the start position hands free. Once at the end of the cylinder travel (start position) the controls automatically switch from reverse to neutral. Both features allow you to clear the split pieces and prepare the next chunk for splitting while the wedge is returning.



TORQUE



SPEED

2 STAGE HYDRAULIC PUMP

Maximize your efficiency with the 2-stage pump that moves quickly and splits powerfully. Stage 1 quickly moves the wedge from the start position to the point of contact where minimal pressure is required. As the splitting action begins, the flow decreases and the pressure increases to provide maximum splitting force.



CYLINDER DYNAMICS

SPEED VS. FORCE

SPEED OF RETURN

Because of shaft displacement, less surface area means that less oil is required, thus increasing the speed to return the splitting wedge to the start position.

FORCE FOR SPLITTING

Full cylinder bore maximizes force because there is more area to apply pressure.



POWERED by
HONDA



WE 200 SERIES

WE225

○ SPLIT OPENING: 24"
△ SPLITTING FORCE: 20 TONS



STANDARD FEATURES

2 Stage
Hydraulic
Pump 11GPM

Colour Options

Hands Free Return
- Auto Neutral

GCV160
Honda Engine

9" Wedge Height

Safety Chains
& 2" Ball Hitch



STANDARD FEATURES

Tires
4.80 x 8"

4" Cylinder Diameter
24" Stroke

Fenders

Log Shelf

All Weather Wood
Splitter Cover

4-Way Wedge

OPTIONAL FEATURES See details on page 38

POWERED by
HONDA

**WE 225**

20 24" ↔

- GCV160 Honda Engine
- 4" Cylinder Diameter, 24" Stroke
- 24" Bed Height
- Horizontal Splitter Orientation
- Dimensions (LxWxH) 81" x 40" x 38"
- Weight 342 lbs.
- 5 Year Consumer Warranty

WE 225 HOR.

- Average Cycle 6.62 seconds
- Full Cycle 13.24 seconds

**WE 235**

20 24" ↕

- GCV160 Honda Engine
- 4" Cylinder Diameter, 24" Stroke
- 31.5" Bed Height
- Horizontal & Vertical Splitter Orientation
- Dimensions (LxWxH) 84" x 40" x 46"
- Weight 397 lbs.
- 5 Year Consumer Warranty

WE 235 HOR/VERT

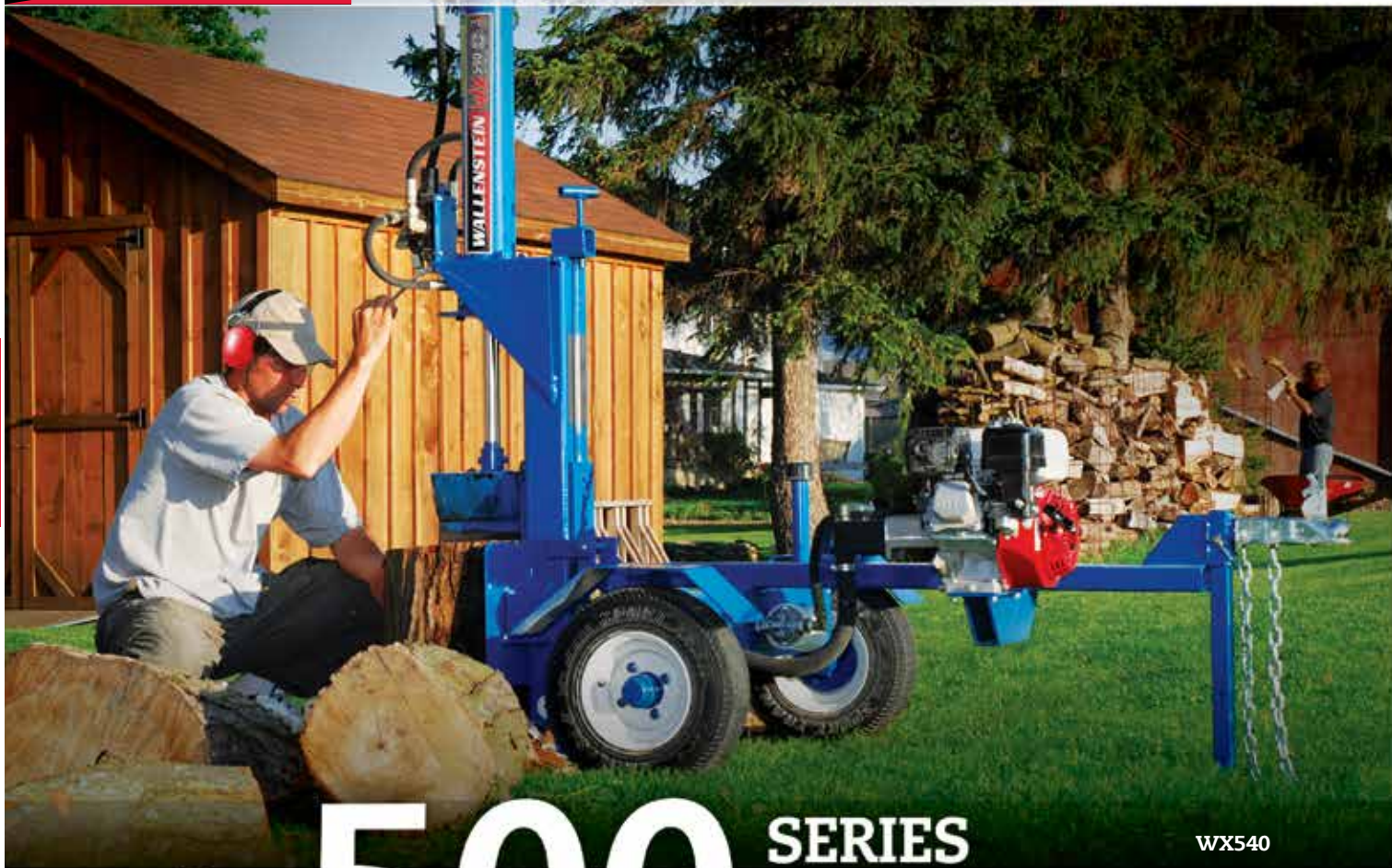
- Average Cycle 6.62 seconds
- Full Cycle 13.24 seconds



WE225

Powerful and versatile, the WE 200 series provides dependable splitting force and fast, efficient workflow for logs up to 24" long. Powered by a Honda engine and backed by Wallenstein's 5 year Warranty, these log splitters are built to handle any size of job.





WX 500 SERIES

WX540

- SPLIT OPENING: 24"
- △ SPLITTING FORCE: 20 TONS

Powerful & versatile, the WX 500 Series provide dependable splitting force and fast, efficient workflow for wood up to 24" long. Powered by a Honda engine, the WX 500 Series is perfect for everyday rental use or seasonal use at home.



STANDARD FEATURES

2 Stage Hydraulic Pump 11 GPM

Colour Options

Hands Free Return - Auto Neutral

Factory Installed Light Kit
Standard on L models only



OPTIONAL FEATURES See details on page 38

All Weather Wood Splitter Cover

4-Way Splitting Wedge

Stroke Limiter

Folding Table

Clamp-On Shelf

POWERED by
HONDA



WX 520

20

24"



WX 520T

20

24"



WX 540

20

24"



- 160 CC GX160 Honda Engine
- 4"/24" Cylinder Diameter/Stroke
- 19" Bed Height
- Horizontal Splitter Orientation
- Dimensions (LxWxH) 72"x42"x36"

- Weight 365 lbs.
- Light Kit (WX 520-L)
- Optional 4-Way wedge: W4110
- Average Cycle 6.62 seconds
- Full Cycle 13.24 seconds

WX 520

WX 520-L

- 160 CC GX160 Honda Engine
- 4"/24" Cylinder Diameter/Stroke
- 28" Bed Height
- Horizontal Splitter Orientation
- Dimensions (LxWxH) 72" x 42" x 45"
- Weight 375 lbs.
- Optional 4-Way wedge: W4110

- Average Cycle 6.62 seconds
- Full Cycle 13.24 seconds

WX 520T

- 160 CC GX160 Honda Engine
- 4"/24" Cylinder Diameter/Stroke
- 24" Bed Height
- Horizontal & Vertical Splitter Orientation
- Dimensions (LxWxH) 80" x 48" x 40"
- Weight 470 lbs.

- Light Kit (WX 540-L)
- Optional 4-Way wedge: W4120
- Average Cycle 6.62 seconds
- Full Cycle 13.24 seconds

WX 540

WX 540-L



160 CC GX 160
Honda Engine



Safety Chains &
2" Ball Hitch



9" Wedge Height

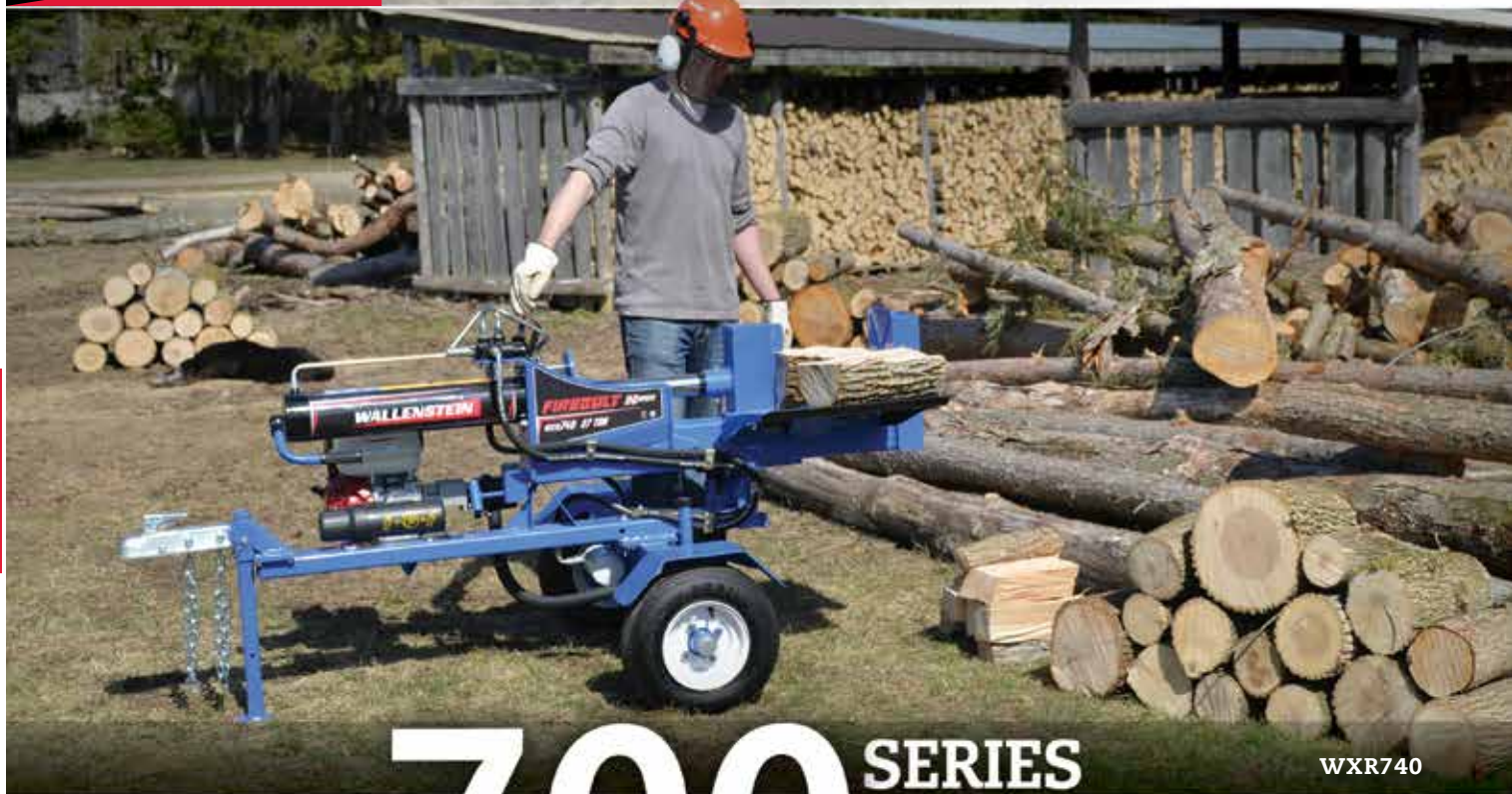


Cylinder Diameter/
Stroke 4"/24"



Tires 4.80 x 8"





WXR 700 SERIES

WXR740

- SPLIT OPENING: 24"
- △ SPLITTING FORCE: 27 TONS

FIREBOLT 2x2 SPEED

Compromise no more between speed or strength. Wallenstein introduces the Firebolt - the first 2x2 speed log splitter, marking the next generation of log splitter that is both faster and stronger.



STANDARD FEATURES

Honda GX200
Equipped with reliable Honda GX gasoline powered engine

Wide Wedge
Forces log apart for faster splitting

Direct Pressure
Full hydraulic force is applied inline with log

2 Stage Hydraulic Pump 11 GPM

Hands Free Return
-Auto Neutral



OPTIONAL FEATURES See details on page 38

Folding Table
WXR 720 Model

Clamp-On Shelf
WXR 720 & 740 Models

4-Way Wedge

Stroke Limiter
Maximizes productivity

POWERED by
HONDA™

**FASTER
AND
STRONGER**

**30%
FASTER**
VS PREVIOUS WX640
11 SEC
FULL CYCLE

**FACTORY
TUNED
TO RATED
PERFORMANCE**

27 TONS
**SPLITTING
FORCE**
3400 PSI

Regenerative Valve Technology

Unlike normal valves, the regenerative valve pressurizes both sides of the cylinder at the same time. Since only one side has a rod, the other side has more surface area, and therefore more force. Even though both sides have equal pressure, they do not have equal force. Therefore, the rod moves outward.

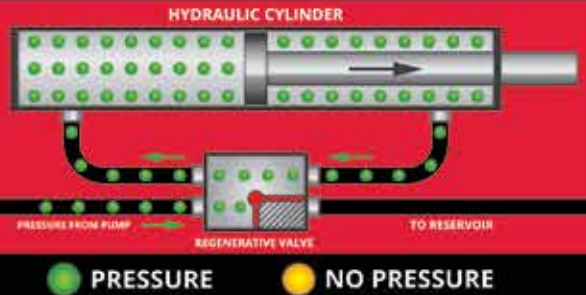


Since the entire volume of the cylinder is already full and pressurized, the pump only has to contribute the missing volume of the rod. This increases the cycle speed and thus, productivity.

REGULAR VALVE OPERATION



REGENERATIVE VALVE OPERATION



● PRESSURE

● NO PRESSURE



Shown with optional features.



WXR 720

27" 24" →

- 196 CC GX200 Honda Engine
- 4.5"/24" Cylinder Diameter/Stroke
- 27" Bed Height
- Horizontal Splitter Orientation
- Dimensions (LxWxH) 76" x 40" x 44"
- Weight 460 lbs.
- Optional 4-Way wedge: W4140
- Wedge Height 10"
- Average Cycle 5.35 seconds
- Full Cycle 11 seconds

WXR 720

WXR 720-L

WXR 740

27" 24" ↕

- 196 CC GX200 Honda Engine
- 4.5"/24" Cylinder Diameter/Stroke
- 27" Bed Height
- Horizontal & Vertical Splitter Orientation
- Dimensions (LxWxH) 83" x 48" x 44"
- Weight 570 lbs.
- Optional 4-Way wedge: W4130
- Wedge Height 9"
- Average Cycle 5.35 seconds
- Full Cycle 11 seconds

WXR 740

WXR 740-L



WX 900 SERIES

WX980

- SPLIT OPENING: 24" - 48"
- △ SPLITTING FORCE: 25 - 31 TONS

Built with regular use in mind, the sturdy and dependable WX 900 Series offers power and heavy duty construction. Upgraded towing features and log lift options make the WX 900 Series the right choice for contractors that need to travel from site to site. With up to 48" splitting length the WX 900 Series is also ideal for outdoor furnace applications.



STANDARD FEATURES

- 2 Stage Hydraulic Pump 16GPM
- Colour Options
- Hands Free Return - Auto Neutral
- 270 CC GX 270 Honda Engine
- 10" Wedge Height
- Safety Chains & 2" Ball Hitch



STANDARD FEATURES

- Tires 5.30 x 12"
- Hydraulic Log Lift (WX950, 960, 970)
- Factory Installed Light Kit

OPTIONAL FEATURES

- Stroke Limiter
- 4-Way Splitting Wedge
- Clamp-on Shelf
- Folding Table

See details on page 38

POWERED by
HONDA

Standard on L models only



WX 910

25 24" ↔

- 270 CC GX270 Honda Engine
- 4.5"/24" Cylinder Diameter/Stroke
- 21" Bed Height
- Horizontal Splitter Orientation
- Dimensions (LxWxH) 78" x 50" x 35"
- Weight 510 lbs.
- Light Kit (WX 910-L)
- Optional 4-Way wedge: W4140
- Average Cycle 5.24 seconds
- Full Cycle 10.48 seconds

WX 910

WX 910-L

WX 910T

25 24" ↔

- 270 CC GX270 Honda Engine
- 4.5"/24" Cylinder Diameter/Stroke
- 28.5" Bed Height
- Horizontal Splitter Orientation
- Dimensions (LxWxH) 78" x 50" x 42"
- Weight 525 lbs.
- Optional 4-Way wedge: W4140
- Average Cycle 5.24 seconds
- Full Cycle 10.48 seconds

WX 910T



WX960 model shown

WX 920

25 36" ↔

- 270 CC GX270 Honda Engine
- 4.5"/36" Cylinder Diameter/Stroke
- 21" Bed Height
- Horizontal Splitter Orientation
- Dimensions (LxWxH) 97" x 63" x 35"
- Weight 720 lbs.
- Optional 4-Way wedge: W4130
- Average Cycle 7.86 seconds
- Full Cycle 15.72 seconds

WX 920

WX 930

25 48" ↔

- 270 CC GX270 Honda Engine
- 4.5"/48" Cylinder Diameter/Stroke
- 21" Bed Height
- Horizontal Splitter Orientation
- Dimensions (LxWxH) 121" x 63" x 35"
- Weight 865 lbs.
- Optional 4-Way wedge: W4130
- Average Cycle 10.48 seconds
- Full Cycle 20.96 seconds

WX 930

WX 950

25 24" ↔

- 270 CC GX270 Honda Engine
- 4.5"/24" Cylinder Diameter/Stroke
- 25" Bed Height
- Horizontal Splitter Orientation
- Folding double front wheels
- Dimensions (LxWxH) 81" x 63" x 38"
- Weight 785 lbs.
- Optional 4-Way wedge: W4130
- Hydraulic log loader
- Average Cycle 5.24 seconds
- Full Cycle 10.48 seconds

WX 950



WX960 model shown



WX 960

25 36" ↔

- 270 CC GX270 Honda Engine
- 4.5"/36" Cylinder Diameter/Stroke
- 25" Bed Height
- Horizontal Splitter Orientation
- Folding double front wheels
- Dimensions (LxWxH) 107" x 63" x 38"
- Weight 990 lbs.
- Optional 4-Way wedge: W4130
- Hydraulic log loader
- Average Cycle 7.86 seconds
- Full Cycle 15.72 seconds

WX 960

WX 970

25 48" ↔

- 270 CC GX270 Honda Engine
- 4.5"/48" Cylinder Diameter/Stroke
- 25" Bed Height
- Horizontal Splitter Orientation
- Folding double front wheels
- Dimensions (LxWxH) 130" x 63" x 38"
- Weight 1135 lbs.
- Optional 4-Way wedge: W4130
- Hydraulic log loader
- Average Cycle 10.48 seconds
- Full Cycle 20.96 seconds

WX 970

WX 980

31 24" ↔

- 270 CC GX270 Honda Engine
- 5"/24" Cylinder Diameter/Stroke
- 26" Bed Height
- Horizontal & Vertical Splitter Orientation
- Dimensions (LxWxH) 80" x 50" x 42"
- Weight 635 lbs.
- Light Kit (WX 980-L)
- Optional 4-Way wedge: W4130
- Average Cycle 6.69 seconds
- Full Cycle 13.38 seconds

WX 980

WX 980-L



WX 300 SERIES 3PH

WX360

○ SPLIT OPENING: 24" - 48"
 △ SPLITTING FORCE: 20 - 31 TONS
 3000 PSI

Making the most of your equipment, the WX 300 Series is a powerful 3-Point hitch log splitter that's ready to work. The WX 300 gives you the splitting force and log length you need on the farm. With up to 48" splitting length the WX 300 Series is ideal for outdoor furnace applications.

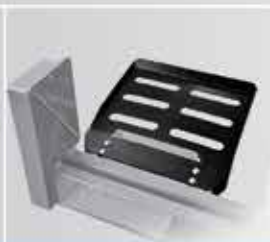


STANDARD FEATURES

Cat I 3PH mount & quick hitch compatible

Colour Options

Hands Free Return - Auto Neutral



OPTIONAL FEATURES

See details on page 38

Stroke Limiter

Log Shelf
(WX310, WX370)

4-Way Splitting Wedge

Closed Centre Hydraulic Valve

Wallenstein uses Pioneer style ball type hydraulic couplings for all tractor auxiliary connections. Substitutions are not available from Wallenstein and must be made at the customers expense.



WX330



WX 310

20

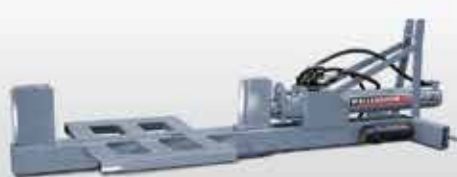
24"



- Wedge Height 9"
- 4"/24" Cylinder Diameter/Stroke
- Horizontal Splitter Orientation
- 10 GPM Recommended Minimum Hydraulic Flow
- Dimensions (LxWxH) 70" x 28" x 24"
- Weight 220 lbs.
- Closed centre hydraulics (WX 310C)
- Optional 4-Way wedge: W4110

WX 310

WX 310C



WX 320

25

36"



- Wedge Height 10"
- 4.5"/36" Cylinder Diameter/Stroke
- Horizontal Splitter Orientation
- 13 GPM Recommended Minimum Hydraulic Flow
- Dimensions (LxWxH) 96" x 30" x 24"
- Weight 540 lbs.
- Closed centre hydraulics (WX 320C)
- Optional 4-Way wedge: W4130

WX 320

WX 320C



WX 330

25

48"



- Wedge Height 10"
- 4.5"/48" Cylinder Diameter/Stroke
- Horizontal Splitter Orientation
- 13 GPM Recommended Minimum Hydraulic Flow
- Dimensions (LxWxH) 120" x 30" x 24"
- Weight 685 lbs.
- Closed centre hydraulics (WX 330C)
- Optional 4-Way wedge: W4130

WX 330

WX 330C



WX 350

20

24"



- Wedge Height 9"
- 4"/24" Cylinder Diameter/Stroke
- Vertical Splitter Orientation
- 10 GPM Recommended Minimum Hydraulic Flow
- Dimensions (LxWxH) 70" x 28" x 18"
- Weight 239 lbs.
- Closed centre hydraulics (WX 350C)
- Optional 4-Way wedge: W4120

WX 350

WX 350C



WX 360

31

24"



- Wedge Height 10"
- 5"/24" Cylinder Diameter/Stroke
- Vertical Splitter Orientation
- 16 GPM Recommended Minimum Hydraulic Flow
- Dimensions (LxWxH) 70" x 28" x 26"
- Weight 349 lbs.
- Closed centre hydraulics (WX 360C)
- Optional 4-Way wedge: W4130

WX 360

WX 360C



WX 370

20

24"



- Wedge Height 10"
- 4"/24" Cylinder Diameter/Stroke
- Horizontal & Vertical Splitter Orientation
- 10 GPM Recommended Minimum Hydraulic Flow
- Dimensions (LxWxH) 86" x 30" x 30"
- Weight 350 lbs.
- Closed centre hydraulics (WX 370C)
- Optional 4-Way wedge: W4120

WX 370

WX 370C

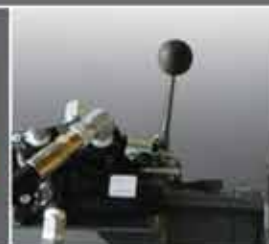


WX410

WX 400 SERIES SKIDSTEER

- SPLIT OPENING: 24" - 36"
- △ SPLITTING FORCE: 20 - 31 TONS
3000 PSI

Powered from your skidsteer, the WX400 series are quick to split. With powerful splitting force and the ease of connecting to your skidsteer, your job will be finished in no time.



STANDARD FEATURES

Skidsteer Mount

Colour Options

Hands Free Return - Auto Neutral*

9" Wedge Height



Wallenstein uses Pioneer style ball type hydraulic couplings for all tractor auxiliary connections. Substitutions are not available from Wallenstein and must be made at the customers expense.

OPTIONAL FEATURE

See details on page 38

4-Way Splitting Wedge*

Stroke Limiter

Log Shelf
(WX310, WX730)

* Hands Free Return - Auto Neutral only on upright models



4-Way Wedge & Stripper Plate

Now available on the WX410 and WX430. New design includes convenient stripper plates, ensuring the log gets released from the wedge when the cylinder is retracted.



WX410



Shown with 4-way wedge



Shown with 4-way wedge



WX 410

20 24"

- 4"/24" Cylinder Diameter/Stroke
- Inverse Horizontal Splitter Orientation
- 10 GPM Recommended Minimum Hydraulic Flow
- Dimensions (LxWxH) 66" x 36" x 22"
- Weight 339 lbs.
- Average Cycle 6.62 seconds*
- Full Cycle 13.24 seconds*
- Optional 4 Way Wedge: W4120 (shown)
- Built-in stripper plates

WX 410

*depends on flow from tractor/skidsteer

WX 430

25 36"

- 4.5"/36" Cylinder Diameter/Stroke
- Inverse Horizontal Splitter Orientation
- 13 GPM Recommended Minimum Hydraulic Flow
- Dimensions (LxWxH) 96" x 36" x 22"
- Weight 585 lbs.
- Average Cycle 11.43 seconds*
- Full Cycle 22.86 seconds*
- Optional 4 Way Wedge: W4130 (Shown)
- Built-in stripper plates

WX 430

*depends on flow from tractor/skidsteer

WX 440

20 24"

- 4"/24" Cylinder Diameter/Stroke
- Horizontal Splitter Orientation
- 10 GPM Recommended Minimum Hydraulic Flow
- Dimensions (LxWxH) 66" x 36" x 22"
- Weight 370 lbs.
- Optional 4-Way wedge: W4120

WX 440

- Average Cycle 6.62 seconds*
- Full Cycle 13.24 seconds*

*depends on flow from tractor/skidsteer



WX 450

25 36"

- 4.5"/36" Cylinder Diameter/Stroke
- Horizontal Splitter Orientation
- 13 GPM Recommended Minimum Hydraulic Flow
- Dimensions (LxWxH) 90" x 36" x 22"
- Weight 680 lbs.
- Optional 4-Way wedge: W4130

WX 450

- Average Cycle 11.43 seconds*
- Full Cycle 22.86 seconds*

*depends on flow from tractor/skidsteer



WX 460

31 24"

- 5"/24" Cylinder Diameter/Stroke
- Horizontal Splitter Orientation
- 16 GPM Recommended Minimum Hydraulic Flow
- Dimensions (LxWxH) 68" x 36" x 24"
- Weight 480 lbs.
- Optional 4-Way wedge: W4130

WX 460

- Average Cycle 9.73 seconds*
- Full Cycle 19.47 seconds*

*depends on flow from tractor/skidsteer



WX 470

20 24"

- 4"/24" Cylinder Diameter/Stroke
- Horizontal & Vertical Splitter Orientation
- 10 GPM Recommended Minimum Hydraulic Flow
- Dimensions (LxWxH) 96" x 36" x 26"
- Weight 375 lbs.
- Optional 4-Way wedge: W4120

WX 470

- Average Cycle 6.62 seconds*
- Full Cycle 13.24 seconds*

*depends on flow from tractor/skidsteer

Splitter Options

4 Way Wedge



Part#	Description
W4110	• WE220, WX310, WX515, WX520, WX520T

Part#	Description
W4120	• WE230, WX350, WX370, WX410, WX440, WX470, WX530, WX540

Part#	Description
W4130	• WX320, WX330, WX360, WX370, WX430, WX450, WX460, WX630, WX640, WX920, WX930, WX950, WX960, WX970, WX980, WXR740

Part#	Description
W4140	• WX615, WX620, WX620T, WX910, WX910T, WXR720

PTO Pump Kit



Part#	Description
W4180	• WX300 series • 3 Point Hitch models

Hitch Extension

Part#	Description
W4202	• 12" hitch extension for 2" ball hitch • Required for ATV

All Weather Wood Splitter Cover



Part#	Description
W4204	• Heavy duty industrial material, made in Canada • Protects your splitter from harsh elements • Fits WE200 Series, WX500 Series, WX600 Series, WXR700 Series

Folding Shelf



Part#	Description
W4212	• WX510, WX515, WX520, WX520T, WX615, WX620, WX620T, WX910, WX910T, WX920, WX930, WXR720, WXR720-L, WE220, WE230

Colour Options



When ordering, please use 3 letter colour designation behind models

Clamp On Shelf



Part#	Description
W4211	• WX310, WX370, WX440, WX460, WX470, WX515, WX520, WX520T, WX530, WX540, W615, WX620, WX620T, WX630, WX640, WX910, WX910T, WX980, WXR720, WXR740

Stroke Limiter



Manually set your return stroke. Great for short pieces, saves time and gets your splitting job done even faster!

Part#	Description
W4213	• WX310, WX320, WX330, WX350, WX370, WX470, WX510, WX515, WX520, WX520T, WX530, WX540, WX615, WX620, WX620T, WX630, WX640, WX910, WX910T, WX920, WX930, WX950, WX970, WXR720, WXR740
W4214	• WX360, WX460, WX980, WX450





WOOD PROCESSORS

WP835

WALLENSTEIN

FORESTRY

FIREWOOD PROCESSOR



THE EASIEST WAY TO GET FROM LOG TO PILE

The WP Firewood Processor improves productivity, ergonomics and minimizes handling. All you have to do is cut.

WP835
Model Shown with optional
Pivoting Chainsaw Arm
(Chainsaw not included)

WALLENSTEIN **WP** WOOD PROCESSOR



CUTS EVERYTHING BUT THE **WOOD**

Processing up to 1.5 cords per hour with only one person, the Wallenstein WP Firewood Processor saves you time, and money while reducing the risk of physical strain.

HANDLE

full-length logs using only a winch.

CUT

to length while standing straight.

SPLIT AND STACK

without heavy lifting.





CUTS PHYSICAL STRAIN

Bringing firewood processing up to your level, the WP Wood Processor reduces unnecessary back strain by eliminating heavy lifting and bending while providing a comfortable cutting height. The ergonomic design allows you to work longer and more efficiently without the risk of personal injury.



No more
BENDING or LIFTING



Limits **SAW DAMAGE**

WOOD PROCESSORS



IS FOR:

RENTAL CENT



Rental
income.



Part-time
firewood
business.



High Volume
firewood users.

CUTS TIME

Low Cost - High Volume Production

1 Person



1 Saw



1 WP



UP
TO **1.5 CORD / HOUR**

CUTS COST



No Front
End Loader
Needed



No Log Deck
Needed



No Conveyor
Needed

WHY WALLENSTEIN?



HIGH-STRENGTH MEMORY-FREE SYNTHETIC ROPE

- Winds Smoothly
- No Kinks
- No Coiling
- No Slivers

EASY LOADING RAMP

WITH GRIPPING
STABILIZERS



NYLON CUTTING GUARDS

Protects
chainsaw teeth
from getting
damaged.

EASY REACH CONTROLS

ADJUSTABLE LOG LENGTH INDICATOR

Flexible guides give you the
perfect cut, everytime.

SPEED | POWER | VERSATILITY | RELIABILITY



ADJUSTABLE 4-WAY WEDGE

Control the size of firewood by raising the wedge with the easy-to-use lever.

OPTIONAL 6-WAY WEDGE



WOOD PROCESSORS

ADJUSTABLE OFFLOAD CHUTE

Pile it high, dump it into a trailer or keep the wood at waist level for easy stacking.



UP TO
54"



WORK WORRY- FREE WITH WALLENSTEIN

You work hard and we've got you covered worry-free with a 5 Year Consumer Warranty that comes with every new Wallenstein product.

For details, visit
wallensteinequipment.com.



WP 200

SERIES 3PH

WP265

○ SPLIT OPENING: 24" - 36"

△ SPLITTING FORCE: 25 TONS

Using the convenience of your tractor's hydraulic system, the WP200 Series Firewood Processor transfers your tractor's horse power straight into wood processing power.



STANDARD FEATURES

3-Point Hitch Mount Cat I/II

Hands Free Return - Auto Neutral
The splitter returns to the start position hands free and automatically switches from reverse to neutral. This allows you to cut the next block while the splitter is returning.

Hydraulic Power From Tractor
No Dedicated Engine to Service



OPTIONAL FEATURES

See details on page 50



Second
Average Full
Stroke Cycle



Nylon Chainsaw Holster
(Chainsaw not included)



PTO Hydraulic Power Pack



6-Way Wedge

FEATURE HIGHLIGHTS

- Larger push block for improved strength while splitting
- Modified cradle so the logs sit higher, allowing a more even 4-way cut
- Better approach angle for wood to roll into splitting station
- All models now have cylinder mounted 2" higher for a more even distribution of splitting force
- Cross wedge can be raised up to 8" high instead of 6" high to better accommodate larger logs



WOOD PROCESSORS

WP 235

25 24"

- 45 hp Recommended Min. HP
- 4.5" x 24" Cylinder Dia. / Stroke
- 3PH Cat I/II Mounting
- 12-18 gpm Recommended Hyd Flow
- 15 gpm @ 540 rpm Optional Accessory Pump Kit
- Hands Free Return - Auto Neutral
- Full Stroke Cycle Time Per Tractor
- 25 Ton Splitting Force @ 3000 psi
- 22" Max Split Length
- 22" Max Log Diameter
- Adjustable 4-way Wedge

WP 235

WP 265

25 36"

- 60 hp Recommended Min. Hp
- 4.5" x 36" Cylinder Dia. / Stroke
- 3PH Cat I/II Mounting
- 12-18 gpm Recommended. Hyd Flow
- 15 gpm @ 540 rpm Optional Accessory Pump Kit
- Hands Free Return - Auto Neutral
- Full Stroke Cycle Time Per Tractor
- 25 Ton Splitting Force @ 3000 psi
- 34" Max Split Length
- 22" Max Log Diameter
- Adjustable 4-way Wedge

WP 265



Log Peavey



Firewood Bin

Mesh Bag

Pivoting Chainsaw Arm
(Chainsaw not included)4 Color Options
Red, Orange, Green, Blue



WP 635 TRAILER

WP635

○ SPLIT OPENING: 24"
 ▲ SPLITTING FORCE: 25 TONS

Winch, block, split and pile your firewood without wasting time or breaking your back. Powered by a 265 CC Subaru engine, the WP635 Firewood Processor offers 25 tons of splitting force and provides a comfortable working height for cutting and an integrated splitter with exit chute.



STANDARD FEATURES

5.30 x 12 Highway Tires
 Solid Axle Suspension



Hands Free Return - Auto Neutral
 The splitter returns to the start position hands free and automatically switches from reverse to neutral. This allows you to cut the next block while the splitter is returning.



Second
 Average Full
 Stroke Cycle

OPTIONAL FEATURES See details on page 50



Nylon Chainsaw Holster
 (Chainsaw not included)



6-Way Wedge



Log Peavey

FEATURE HIGHLIGHTS

- Larger push block for improved strength while splitting
- Modified cradle so the logs sit higher, allowing a more even 4-way cut
- Better approach angle for wood to roll into splitting station
- All models now have cylinder mounted 2" higher for a more even distribution of splitting force
- Cross wedge can be raised up to 8" high instead of 6" high to better accommodate larger logs



WP 635

25 24"

- 265 CC Subaru Engine, rope start
- 16 gpm, 2 stage Hyd Flow
- 4.5" x 24" Cylinder Diameter / Stroke
- Auto Return Valve operation
- 11-14 second Full Stroke Cycle Time
- 25 Ton Splitting Force

WP 635

- 22" Max Split Length
- 22" Max Log Diameter
- Adjustable 4-way Wedge
- Adjustable 6-way Wedge Option
- Solid Axle Suspension
- 5.30 x 12 Tire Size

- 2" Ball Coupler
- 60" Winching Strap Included (Part# Z92405)
- 1600 lbs Weight
- Dimensions (LxWxH) 210"x62"x63"
- Folded Dimensions (LxWxH) 122"x62"x63"
- Hydraulic Winch

- 50' Length Nylon Winch Cable
- 1550 lbs Winch Pulling Force
- 54" Height Max Discharge Chute



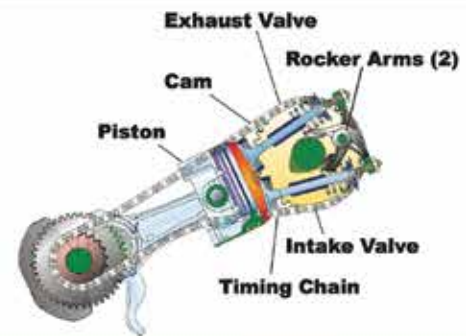
Powered by



SUBARU

**265 CC
OVERHEAD
CAM ENGINE**

- Higher Performance
- Easy Start
- Low Noise
- Lower Exhaust Emissions
- Less Fuel Consumption



Firewood Bin

Mesh Bag



Pivoting Chainsaw Arm
(Chainsaw not included)



4 Color Options
Red, Orange, Green, Blue





WP 800 SERIES TRAILER WP865

- SPLIT OPENING: 24" - 36"
- △ SPLITTING FORCE: 25 TONS

With the ability to split logs up to 34", a 404 CC Subaru engine and auto cycle valve operation, the WP800 Series of Firewood Processors offer all the features and benefits of the WP635 model while designed to handle higher volume and faster processing time.



Splitting is a one-step, hands free process that operates at the same time as you prepare the next block. Wallenstein's Auto Cycle feature gives you single action control of splitting. Auto Cycle powers the log through the adjustable 4-way wedge and returns to the home position quickly, ready for the next log.



STANDARD FEATURES

Single Side Controls
Including Engine Start/Stop, Throttle and Hour Meter

OPTIONAL FEATURES See details on page 50



Second
Average Full
Stroke Cycle

WP835



Nylon Chainsaw Holster
(Chainsaw not included)



6-Way Wedge



Log Peavey

FEATURE HIGHLIGHTS

- Larger push block for improved strength while splitting
- Modified cradle so the logs sit higher, allowing a more even 4-way cut
- Better approach angle for wood to roll into splitting station
- All models now have cylinder mounted 2" higher for a more even distribution of splitting force
- Cross wedge can be raised up to 8" high instead of 6" high to better accommodate larger logs



Shown with optional Pivoting Chainsaw Arm

WP 835

25 24"

- 404 CC Subaru Engine / electric start
- 22 gpm, 2 stage Hydraulic Flow
- 4.5" x 24" Cylinder Dia. / Stroke
- Auto Return Valve operation
- 10-12 second Full Stroke Cycle Time
- 25 Ton Splitting Force
- 22" Max Split Length
- 22" Max Log Diameter
- Adjustable 4-way Wedge
- Adjustable 6-way Wedge Option
- Torflex® Suspension
- 5.30 x 12 Tire Size
- 2" Ball Coupler
- 60" Winching Strap Included (Part# Z92405)
- Highway Signal Lights
- 1840 lbs Weight
- Dimensions (LxWxH) 210" x 62" x 63"
- Folded Dimensions (LxWxH) 122" x 62" x 63"
- Hydraulic Winch
- 50' Length Nylon Winch Cable
- 1550 lbs Winch Pulling Force
- 54" Height Max Discharge Chute

WP 835

WP 865

25 36"

- 404 CC Subaru Engine / electric start
- 22 gpm, 2 stage Hydraulic Flow
- 4.5" x 36" Cylinder Diameter / Stroke
- Auto Return Valve operation
- 11-13 second Full Stroke Cycle Time
- 25 Ton Splitting Force
- 34" Max Split Length
- 22" Max Log Diameter
- Adjustable 4-way Wedge
- Adjustable 6-way Wedge Option
- Torflex® Suspension
- 5.30 x 12 Tire Size
- 2" Ball Coupler
- 60" Winching Strap Included (Part# Z92405)
- Highway Signal Lights
- 1970 lbs Weight
- Dimensions (LxWxH) 238" x 62" x 63"
- Folded Dimensions (LxWxH) 150" x 62" x 63"
- Hydraulic Winch
- 50' Length Nylon Winch Cable
- 1550 lbs Winch Pulling Force
- 54" Height Max Discharge Chute

WP 865



TORFLEX®
Rubber Torsion Suspension Axles
and 5.30 x 12 Highway Tires



**Highway Signal Lights and
Fender Kit**



**Subaru® Electric Start
404 CC Overhead Cam Engine**



Firewood Bin Mesh Bag



Pivoting Chainsaw Arm
(Chainsaw not included)



4 Color Options
Red, Orange, Green, Blue



Firewood Processor Options

48" Log Peavey



Part#	Description
Z99001	• Works with all your log handling duties

Nylon Chainsaw Holder



Part#	Description
P100	• Fits all models

Pivoting Chainsaw Holder



Part#	Description
P200	<ul style="list-style-type: none"> • For use with WP Firewood Processor • Easily mounts to most chain saws • Securely holds chainsaw in place while cutting logs (dual bar studs required) • Recommended/maximum chainsaw size: 24"

Spare Pivoting Chainsaw Adaptor



Part#	Description
P210	<ul style="list-style-type: none"> • Spare adaptor kit for second chainsaw • Bolts to Chainsaw

Firewood Mesh Bag and Frame



Part#	Description
Z99007	• Firewood Mesh Bag
P500	• Firewood Mesh Bag Frame (optimal skid size: 48" x 48")

6 Way Wedge



Part#	Description
P600	• Fits WP230, 260, 630, 830, 860
P601	• Fits WP235, 265, 635, 835, 865

60" Winching Strap

Part#	Description
Z92405	• For all WP Models

PTO Powerpak

Part#	Description
P300	• For WP200 Series

Closed Center Valve

Part#	Description
P400	• For WP200 Series

Colour Options



When ordering, please use 3 letter colour designation behind models



FX110

SKIDDING WINCH

WALLENSTEIN

**FX
FXP**

**SKIDDING WINCH
SKIDDING PLATE**

3-POINT HITCH



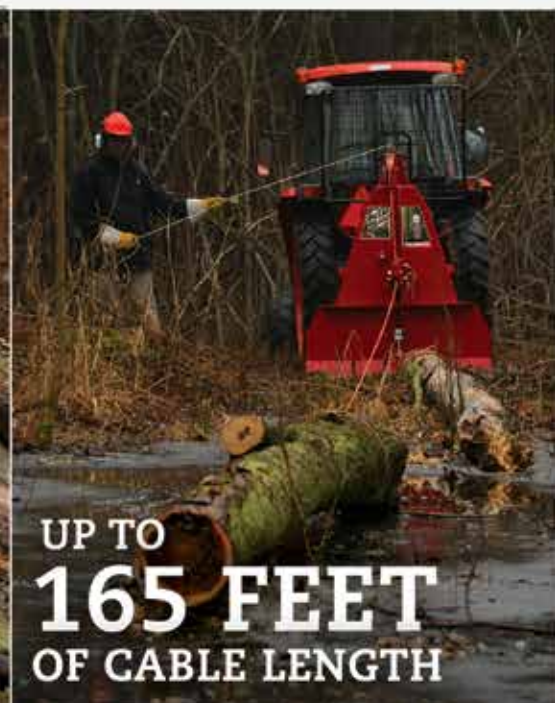


NAVIGATE THE FARTHEST REACHES OF YOUR FOREST

Managing the full potential of your forest is easy with the pulling strength of the Bush Pilot Skidding Winch. You can now reach the trees you need to cut, even on steep hills or swampland without the need for large heavy equipment. For tractors 15 – 140 hp, the new Bush Pilot builds on Wallenstein's strong reputation of skidding winches with pulling strength up to 14,000-lbs and reach up to 165 feet.



UP TO
14,000 LBS
OF PULLING STRENGTH



UP TO
165 FEET
OF CABLE LENGTH



**KEYHOLE SLIDERS
PULL UP TO 3 LOGS**



WORK WORRY-FREE WITH WALLENSTEIN

You work hard and we've got you covered worry-free with a 5 Year Consumer Warranty that comes with every new Wallenstein product.

For details, visit
wallensteinequipment.com.



**OPTIONAL
SYNTHETIC ROPE**



**OPTIONAL
REMOTE CONTROL**



**OPTIONAL
SELF-RELEASING
DIRECTIONAL PULLEY**



Can't get a straight line to your logs? Wallenstein's incredibly useful self-releasing directional pulley lets you safely winch logs around corners, reducing damage to the logs.



FX

BUSH PILOT

SKIDDING WINCH



STANDARD FEATURES

1 Choker Chain

Hydraulic 2-Speed Winch



STANDARD FEATURES

Keyhole Slots

Winch Cable End



STANDARD FEATURES

Keyhole Slots

Winch Cable End



FX35

- 3,500 lb Pulling Capacity
- 15 - 30 Recommended HP
- Category 1 3PH Mount
- 22-260 ft./min.
- 80' of 5/16" Synthetic Rope
- 1 Choker Chain
- Weight: 245 lbs
- Dimensions: 27" x 40" x 48"
- Two Speed Hydraulic Winch*
- * Requires 2-12 GPM, Optimum 6 GPM

FX 35



FX66

- 6,600 lb Pulling Capacity
- 30 - 60 Recommended HP
- Category 1 3PH Mount
- 540 RPM Max PTO Input Speed
- 96-238 ft./min. Cable Speed at 540 RPM
- 165' of 3/8" Cable
- Mechanical, Dry Disk Clutch
- Weight: 450 lbs
- Dimensions: 19" x 40" x 71"
- * Keyhole sliders not included with FX66
- * Bottom pulley not included

FX 66



FX85

- 8,500 lb Pulling Capacity
- 30 - 60 Recommended HP
- Category 1 3PH Mount
- 540 RPM Max PTO Input Speed
- 96-238 ft./min. Cable Speed at 540 RPM
- 165' of 3/8" Cable
- 2 Choker Chain
- Mechanical, Dry Disk Clutch
- Weight: 470 lbs
- Dimensions: 27" x 40" x 76"
- Optional Bolt-On Remote Control Kit (Part# F200)
- FX85R Includes Factory Installed Remote Control Kit **

FX 85

FX 85R



**OPTIONAL SELF-RELEASE
DIRECTIONAL PULLEY**



OPTIONAL FEATURES See details on page 56

Keyhole Sliders

**Height Adjustable
Snatch Block**

**Removable Clutch
Assembly**

Trailer Hitch

PTO Drive

Synthetic Rope

**Self Releasing
Directional Pulley**

Remote Control



FX110

- 11,000 lb Pulling Capacity
- 45 - 100 Recommended HP
- Category 1 & 2 3PH Mount
- 540 RPM Max PTO Input Speed
- 98-253 ft./min. Cable Speed at 540 RPM
- 165' of 7/16" Cable
- 2 Choker Chain
- Mechanical, Dry Disk Clutch
- Weight: 796 lbs
- Dimensions: 28" x 50.5" x 79"
- Optional Bolt-On Remote Control Kit (Part# F200)
- FX110R Includes Factory Installed Remote Control Kit **

FX 110

FX 110R

FX140

- 14,000 lb Pulling Capacity
- 60 - 140 Recommended HP
- Category 1 & 2 3PH Mount
- 540 RPM Max PTO Input Speed
- 98-246 ft./min. Cable Speed at 540 RPM
- 165' of 1/2" Cable
- 2 Choker Chain
- Mechanical, Dry Disk Clutch
- Weight: 898 lbs
- Dimensions: 28" x 58.5" x 80"
- Optional Bolt-On Remote Control Kit (Part# F205)
- FX140R Includes Factory Installed Remote Control Kit **

FX 140

FX 140R

** Remote kit requires 12V from tractor,
1-2 GPM hydraulic flow from tractor. The
winch is pre-set at 700 psi



STANDARD FEATURES

Four Chain Holder Slots

Capable of handling multiple logs at one time, the FXP reduces the drag surface by lifting the front end of the logs. This gives you better control when turning, as the log acts like a trailer. The optional Choker Chains and Log Tongs are both ideal tools for quick hookup.

Removable Hitch



Colors Available



OPTIONAL FEATURES

Log Tongs

FXP30

- Cat. 1 & 2, 3 PH Mounting
- 2 Saddle Grab Hooks
- 2" Receiver for Ball Mount Towbar
- Weight 216 lbs. (Uncrated)
- Dimensions:
Uncrated (LxWxH) 44" x 25" x 44"
Crated (LxWxH) 44" x 25" x 44"
- Up to 80 hp Recommended Range

FXP 30

FXP20

- Cat. 1, 3 PH Mounting
- 1 Saddle Grab Hooks
- 2" Receiver for Ball Mount Towbar
- Weight 98 lbs. (Uncrated)
- Dimensions:
Uncrated (LxWxH) 35" x 12" x 32"
Crated (LxWxH) 38" x 32" x 18"
- Up to 40 hp Recommended Range

FXP 20

Skidding Winch & Plate Options

Remote Control Winch Kit

Part#	Description
F200	<ul style="list-style-type: none"> • FX85 & FX110 Remote Control Transmitter range = 300ft (100 metres) • Remote requires 12 volts and 1-2 g.p.m. Hydraulic flow from tractor • Not available for FX35, FX66
F205	<ul style="list-style-type: none"> • FX140 Remote Control Transmitter range = 300ft (100 metres) • Remote requires 12 volts and 1-2 g.p.m. Hydraulic flow from tractor • Not available for FX35, FX66

Wallenstein uses Pioneer style ball type hydraulic couplings for all tractor auxiliary connections. Substitutions are not available from Wallenstein and must be made at the customers expense.

Self Releasing Directional Pulley

Part#	Description
5089A100	<ul style="list-style-type: none"> • Allows for easy winching around corners

Logging Tongs

Part#	Description
Z99003	<ul style="list-style-type: none"> • Opens to approx 26 inches • for use with skidding blade only

Synthetic Choker

Part#	Description
Z92125	<ul style="list-style-type: none"> • 5 ft Synthetic Choker with Rod Chain End
Z92126	<ul style="list-style-type: none"> • 7 ft Synthetic Choker with Rod Chain End

Synthetic Rope

Part#	Description
Z92124	<ul style="list-style-type: none"> • 200 ft 1/2" Synthetic Mainline with Hook Chain End (FX110, FX140)
Z92123	<ul style="list-style-type: none"> • 200 ft 7/16" Synthetic Mainline with Hook Chain End (FX66, FX85)

Choker Chain

Part#	Description
Z92318	<ul style="list-style-type: none"> • 90" choker chain with sliding hook

Colour Options



When ordering, please use 3 letter colour designation behind models



WALLENSTEIN



TIMBER TALON

LOG LOADERS & GRAPPLES



JACK OF ALL TRAILED



Start finishing your to-do list with the highly versatile Wallenstein Timber Talon. For rural property owners with woodlots, the Timber Talon is incredibly useful, offering handy ways to make the most use of the same trailer.

Designed for ease of use and built for rugged durability, the Timber Talon is made in Canada and includes a 5-year warranty.

Explore the wide range of features and options that make the Timber Talon the right tool for the many jobs around your property.



LOG BYPASS GRAPPLE

Small and large logs stay tight with the pass-through tines.

360° ROTATION



SELF CENTERING BUNK POSTS

If bumped, the log posts naturally return to their proper position.





DIGGING BUCKET

Trenches and holes are quickly dug with bucket attachments available in sizes (inches): 9, 12, 15, 18



AUGER DRIVE

Hydraulically powered rotary drive accepts auger diameters of 6" and 9" with a depth of 42".



DUMP BOX

Handling and unloading materials with the dump body is useful for almost limitless applications.



FLAT BED

Wire mesh deck is perfect for carrying almost anything.





FEATURES

Wallenstein Timber Talon is loaded with features and options designed to give you the trailer that works best for you. Check out the standard features and explore the useful components for added flexibility.



Safety Zone

270° Boom swing range



5 Stick Swivel Controls

Separate grapple and stabilizer levers isolate the boom controls for safe operation.



Hydraulic Stabilizers

Creates a wider base for greater stability



Walking Beam Axle

Smoothly travel over uneven terrain.



Clevis Hitch

Allows for full independent movement from the tow vehicle.

MATCH YOUR TRACTOR



Red

Green

Blue

Orange

Yellow



HYDRAULIC WINCH

Pull logs deep out of the woods with the available synthetic rope, 2-speed hydraulic winch.



TIMBER TALON

HIGHWAY PACKAGE

For frequent road travel, the highway package offers valuable features for safety and durability. See model pages for specifications.



Signal Lights



Highway Tires



Ball Hitch



Brakes



LX95 / LT30

Big on payload, lift capacity and reach, the Timber Talon LX95/LT30 is the ultimate trailer for larger all terrain vehicles.

Recommended for use with minimum 600cc ATVs, Side-by-sides or 30hp compact tractors.

Check your machine's owner's manual to confirm maximum towing capacity.



OFF ROAD
TIRES

27 x 10.5 x 15 - 8 PLy



SURGE BRAKES

The hydraulic brakes automatically engage if the trailer begins to surge forward, such as traveling downhill or slowing.



AUGER

- 42" Hole Depth
- Up to 9" in Diameter



SLIDING AXLE

Ideal for ATV users, the hydraulic sliding axle allows the trailer weight to be shifted towards the tongue for better traction or remain balanced under the axle.



BACKHOE

- 34" Digging Depth (24" Flat Bottom)



POWER PACK

Powered by
SUBARU

Ready to work without relying on auxiliary hydraulics, the Timber Talon is available with a Subaru 169 CC engine, hydraulic reservoir, hydraulic pump, and hoses.

SPECIFICATIONS

GRAPPLES

OPTIONS

STANDARDS

- Trailer Bed Length: 96"
- Dimensions: (LxWxH) 161"x64"x58"
- Tongue Weight:
 - Tandem Position: Front** (Grapple Only) 105 lbs (Grapple & Power Pack) 210 lbs
 - Tandem Position: Back** (Grapple Only) 374 lbs (Grapple & Power Pack) 516 lbs
- Trailer Weight: (GVW) 892 lbs
- Ground Clearance: 14"
- Standard Mounting for LX95 Grapple/Power Pack
- 4 Position Manual Tandem Axle Adjustment
- Walking Beam Axles
- 8 Removable Self centering Bunk Posts pinned for transport
- Integrated Safety Back Guard
- Clevis Hitch

LT30 OFF ROAD

- Off road tires: 27 x 10.5 x 15 - 8 Ply
- Clevis Hitch

LT30H HIGHWAY PACKAGE

- Highway tires: ST205-75R14 LRC
- Signal lights
- Surge brakes
- 2" Ball hitch

LT30A ATV PACKAGE OFFROAD *

- Off road tires: 27 x 10.5 x 15 - 8 Ply
- Clevis Hitch
- Hydraulic sliding axle
- Surge brakes

*Check manual to confirm maximum towing capacity

LT30HA HIGHWAY PACKAGE HYDRAULIC AXLE

- Highway tires: ST205-75R14 LRC
- Signal lights
- Surge brakes
- 2" Ball hitch
- Hydraulic sliding axle

LX95

- Ship Weight: 733 lbs
- Maximum Lift Capacity: 800 lbs
- Maximum Reach: 9'6"
- Vertical Reach: 15' (Ground to Grapple Knuckle)
- Grapple Rotation: 360°
- Boom Rotation: 270°
- Grapple Opening: 3" - 30"
- Stabilizer Width: 7' 5"
- Recommended Hydraulic Flow: 1-2 GPM
- Dipper & Grapple Cylinders: 2.5"
- Main Boom Cylinder: 2.5"
- Stabilizer Cylinder: 2"

LX95PW

- Ship Weight: 854 lbs
- Includes all LX95 standard features
- Includes hydraulic sliding axle
- Includes factory installed hydraulic winch
 - 80' Synthetic Rope
 - 2 Speed
- Includes Choker Chain

LX95W

- Ship Weight: 854 lbs
- Includes all LX95 standard features
- Includes factory installed hydraulic winch
 - 80' Synthetic Rope
 - 2 Speed
- Includes Choker Chain

LX95P

- Ship Weight: 733 lbs
- Includes hydraulic axle control
- Includes all LX95 standard features

TRAILER

- Dump Box - 25 cu ft
- Expanded metal flat bed: 9' x 5'

GRAPPLE

- L101 Tractor Hydraulic Kit
- L301 169 CC Subaru Power Pack
- Backhoe Bucket Sizes: 9", 12", 15", 18"
- Auger Sizes: 6", 9"

TRAILERS

TIMBER TALON



LX115 / LT60

With greater capacity, the Timber Talon LX115/LT60 is a robust trailer ideal for 45hp compact tractors and full size pickup trucks.

Off-road or highway, this trailer is the perfect companion for hauling logs, transporting cargo or light excavation work.



OFFROAD TIRES

11L15 x 15 x 8 - 12 PLV



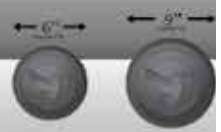
ELECTRIC BRAKES

Full size electric drum brakes control the trailer for safe highway travel.



AUGER

- 42" Hole Depth
- Up to 9" in Diameter



POWER PACK

Ready to work without relying on auxiliary hydraulics, the Timber Talon is available with a Subaru 265 CC engine, hydraulic reservoir, hydraulic pump and hoses.



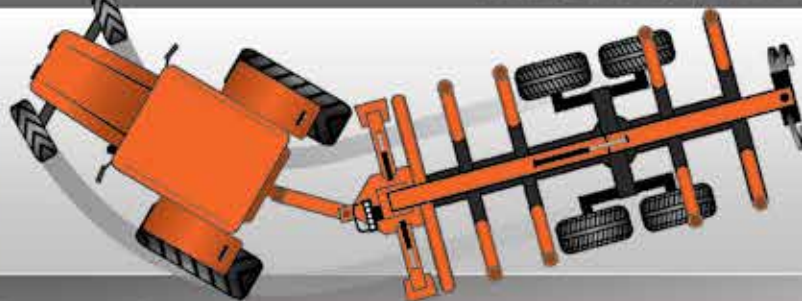
Powered by
SUBARU

BACKHOE

- 41" Digging Depth (24" Flat Bottom)



HYDRAULIC DRAW BAR



Easily navigate through narrow trails with the optional hydraulic articulated draw bar giving you a tighter turning radius.

TIMBER TALON

SPECIFICATIONS

TRAILERS

STANDARDS

- Trailer Bed Length: 132"
- Dimensions: (LxWxH) 198"x68"x60"
- Tongue Weight: (Grapple Only) 517 lbs
- Tongue weight (grapple & power pack) 647 lbs
- Trailer Weight: (GVW) 1340 lbs
- Ground Clearance: 17"
- Standard Mounting for LX115 Grapple/Power Pack
- Walking Beam Axles
- 8 Removable Self centering Bunk Posts
- Integrated Safety Back Guard
- Clevis Hitch

LT60 OFFROAD

- 10,000 lb Load Capacity
- Offroad Tires: 11L15 x 15 x 8 - 12 Ply
- Walking Beam Axle

LT60H HIGHWAY PACKAGE

- 11,500 lb Load Capacity
- Highway Tires: ST235-80R16 LRE
- Signal Lights
- 2-5/16" Ball Hitch
- 4 Wheel Electric Brakes

GRAPPLES

LX115

- Ship Weight: 1016 lbs
- Maximum Lift Capacity 1200 lbs
- Maximum Reach 11'6"
- Grapple Rotation: 360°
- Boom Rotation: 270°
- Grapple Opening: 3" - 38"
- Stabilizer Width: 8' 11"
- Recommended Hydraulic Flow 4-6 GPM
- Dipper & Grapple Cylinders: 2.5"
- Main Boom Cylinder: 3"
- Stabilizer Cylinder: 2"

LX115W

- Ship Weight: 1129 lbs
- Includes all LX115 standard features
- Factory installed hydraulic winch
- 80' Synthetic Rope
- 2 Speed
- Includes Choker Chain

OPTIONS

TRAILER

- Dump Box: 25 cu ft
- Expanded metal flat bed: 9' x 5'
- Hydraulic Articulating Draw Bar

GRAPPLE

- L101 Tractor Hydraulic Kit
- L601 265 CC Subaru Power Pack
- 2 Speed Hydraulic Winch
- Backhoe Bucket Sizes: 9", 12", 15", 18"
- Auger Sizes: 6", 9"



L400 3PH MOUNT

Connected to your tractor's 3PH using a specially designed adapter, the boom's lifting weight is transferred to the ground through the hydraulic stabilizers.

When all you need is a boom grapple, the L400 is Wallenstein's Category II 3PH tractor mount for grapples.

The L400 provides a stable base for log handling, backhoe digging and rotary auger drilling using either the LX95 or LX115 grapple.



L400 3PH MOUNT WORKS WITH:

LX95

LX95W

- Recommended HP: 40 HP
- Maximum Reach: 9' 5"
- Includes L101 Hydraulic Tractor Kit

LX115

LX115W

- Recommended HP: 60 HP
- Maximum Reach: 11' 6"
- Includes L101 Hydraulic Tractor Kit

See details on page 67

Log Loader Models

LX95/LT30 Packages

Package#	Description	Part#
A	• Off Road Tires: 27 x 10.5 x 15 - 8 Ply • Standard Grapple	LT30 LX95
B	• Highway Tires: ST205-75R14 LRC • Standard Grapple	LT30H LX95
C	• Off Road Tires: 27 x 10.5 x 15 - 8 Ply • Hydraulic Sliding Axle • Standard Grapple	LT30A LX95P
D	• Highway Tires: ST205-75R14 LRC • Hydraulic Sliding Axle • Standard Grapple	LT30HA LX95P
E	• Off Road Tires: 27 x 10.5 x 15 - 8 Ply • Grapple with Hydraulic Axle Control and Hydraulic Winch	LT30A LX95PW
F	• Highway Tires: ST205-75R14 LRC • Grapple with Hydraulic Axle Control and Hydraulic Winch	LT30HA LX95PW
G	• Off Road Tires: 27 x 10.5 x 15 - 8 Ply • Grapple with Hydraulic Winch	LT30 LX95W
H	• Highway Tires: ST205-75R14 LRC • Grapple with Hydraulic Winch	LT30H LX95W

For above packages, must add one of the following power source.

L301	• Subaru power pack
L101	• Tractor hydraulic kit

LX115/LT60 Packages

Package#	Description	Part#
A	• Off Road Tires: 11L15 x 15 x 8 - 12 Ply • Standard Grapple	LT60 LX115
B	• Highway Tires: ST235-80R16 LRE • Standard Grapple	LT60H LX115
C	• Off Road Tires: 11L15 x 15 x 8 - 12 Ply • Grapple with Hydraulic Winch	LT60 LX115W
D	• Highway Tires: ST235-80R16 LRE • Grapple with Hydraulic Winch	LT60H LX115W

For above packages, must add one of the following power source.

L601	• Subaru power pack
L101	• Tractor hydraulic kit

3PH Grapple Packages

Package#	Description	Part#
A	• 3PH & Grapple	L400 LX95
B	• 3PH & Grapple with Winch	L400 LX95W
C	• 3PH & Grapple	L400 LX115
D	• 3PH & Grapple with Winch	L400 LX115W

Log Loader Accessories

Power Source Options

Part#	Description
L101	• Tractor Hydraulic Kit • LX95/LT30, LX115/LT60
L301	• 6.0 Subaru Powerpak • LX95/LT30
L601	• 9.0 Subaru Powerpak • LX115/LT60

Dump Box

Part#	Description
L310	• LX95/LT30
L620	• LX115/LT60

Flat Bed Kit

Part#	Description
L330	• LX95/LT30
L630	• LX115/LT60

Pintle Hitch Kit

Part#	Description
L640	• LX115/LT60

Bucket

Part#	Description
BK2609	• 9" Bucket • 3 Teeth
BK2612	• 12" Bucket • 3 Teeth
BK2615	• 15" Bucket • 4 Teeth
BK2618	• 18" Bucket • 4 Teeth

Articulating Tongue Kit

Part#	Description
L650	• LX115/LT60

Replacement Parts

Part#	Description
Z54107	• Hydraulic Rotator • 360 Degree
6012A215	• Log grapple • 3" to 38" opening • high tensile steel construction • Fits LX115
6014A100	• Log grapple • 3" to 27.5" opening • high tensile steel construction • Fits LX95

3PH Hitch Adaptor

Part#	Description
L400	• Cat 2, includes flow divider, connections and hoses • LX95, LX115

Backhoe Kit

Part#	Description
BA201	• LX95, LX115

Auger Kit

Part#	Description
LA610	• 6" Diameter Auger Kit • LX95, LX115
LA910	• 9" Diameter Auger Kit • LX95, LX115



When ordering, please use 3 letter colour designation behind models

Wallenstein uses Pioneer style ball type hydraulic couplings for all tractor auxiliary connections. Substitutions are not available from Wallenstein and must be made at the customers expense.

LX95/LT30 Timber Talon Feature Chart

Package	Description	Boom Mounting Combination		Dual Speed Winch	Surge Brakes	Highway Kit	Hydraulic Axle
A	Grapple Boom Off Road Trailer	LX95	LT30				
B	Grapple Boom Trailer - Highway Kit	LX95	LT30H		✓	✓	
C	Grapple Boom Trailer - ATV Kit	LX95P	LT30A		✓		✓
D	Grapple Boom Trailer - Highway & Hydraulic Tandem Kits	LX95P	LT30HA		✓	✓	✓
E	Grapple Boom with Winch Trailer - ATV Kit	LX95PW	LT30A	✓	✓		✓
F	Grapple Boom with Winch Trailer - Highway & Hydraulic Tandem Kits	LX95PW	LT30HA	✓	✓	✓	✓
G	Grapple Boom with Winch Off Road Trailer	LX95W	LT30	✓			
H	Grapple Boom with Winch Trailer - Highway Kit	LX95W	LT30H	✓	✓	✓	

LX115/LT60 Timber Talon Feature Chart

Package	Description	Boom Mounting Combination		Dual Speed Winch	Highway Kit
A	Grapple Boom Off Road Trailer	LX115	LT60		
B	Grapple Boom Trailer - Highway Kit	LX115	LT60H		✓
C	Grapple Boom with Winch Off Road Trailer	LX115W	LT60	✓	
D	Grapple Boom with Winch Trailer - Highway Kit	LX115W	LT60H	✓	✓

3PH Timber Talon Feature Chart

Package	Description	Boom Mounting Combination		Dual Speed Winch
A	Grapple Boom 3 Point Hitch Kit	LX95	L400	
B	Grapple Boom with Winch 3 Point Hitch Kit	LX95W	L400	✓
C	Grapple Boom 3 Point Hitch Kit	LX115	L400	
D	Grapple Boom with Winch 3 Point Hitch Kit	LX115W	L400	✓



LXG

LOG GRAPPLES

3-POINT HITCH
SKIDSTEER
MINI SKIDSTEER

TIMBER TALON




LXG330RP
TIMBER TALON

LXG300

SERIES 3PH

GRAPPLE OPENING
 **48"-72"**

Fast forward your logging productivity with Wallenstein's Three-Point Hitch Log Grapple for compact tractors. Engineered to withstand the toughest forest conditions, these grapples are perfect partners for farmers, rural property owners, and logging contractors to forward logs out of the woods with confidence.

SPRING CENTERED SERIES



LXG 320S

- Category I 3PH Mount
- Dimensions 51" x 52" x 43"
- Weight 350 lbs
- Boom Lift Capacity 3000 lbs
- Rotator Rating 6750 lbs
- 180° Lockable Spring return
- Grapple Opening 3"- 48"
- Grapple Cylinder clamp force 9400 lbs
- Recommended 20-60 HP
- Hydraulic Flow 5- 10 gpm
- Hydraulic Pressure 3000 psi

LXG 320S



LXG 330S

- Category II & III 3PH Mount
- Dimensions 70" x 76" x 56"
- Weight 836 lbs
- Boom Lift Capacity 4500 lbs
- Rotator Rating 9000 lbs
- 180° Lockable Spring return
- Grapple Opening 3"- 72"
- Grapple Cylinder clamp force 21000 lbs
- Recommended 60-180 HP
- Hydraulic Flow 5- 10 gpm
- Hydraulic Pressure 3000 psi

LXG 330S



BYPASS GRAPPLE

Grapple tines fold together as tight as 3 inches, ensuring easy handling of smaller logs and branches.



360 DEGREE HYDRAULIC ROTATOR

Pick up logs in any position and move them exactly where you want with the 360 degree hydraulic rotator. LX320R, LX330R and LX330RP only.



SPRING-CENTERED GRAPPLE WITH LOCKING POSITIONS

The grapple twists when turning corners but stays straight when grabbing logs. Includes lateral and in-line lock positions. LX320S & LX330S only.



EXTENDABLE BOOM

The 24" extendable boom allows your tractor to reach logs off-trail or between stumps. LXG330RP only.

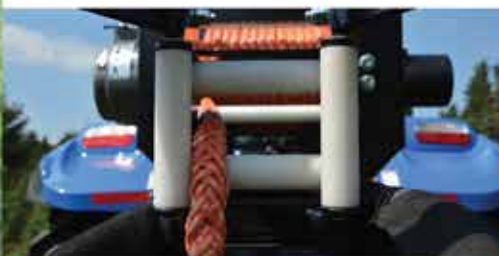


PUSH BAR

Made with AR400 steel, applies pressure against the tree allowing operators to safely guide the tree as it falls. LXG330 series only.



COLOURS



INTEGRATED FAIRLEAD

Provides a tangle-free entry point for the winch rope, keeping it organized and away from the grapple. LXG330RP only.



9,000 LB WARN WINCH

Keep your tractor on-trail and retrieve logs deep in the woodlot with available Warn Winch. LXG330RP only.

100-FOOT SYNTHETIC ROPE

Haul logs safely out of the woods with 100 feet of non-coiling synthetic rope. LXG330RP only.

HYDRAULIC ROTATOR SERIES

PROFESSIONAL SERIES



LXG 320R

(48")

- Category I 3PH Mount
- Dimensions 51" x 52" x 46"
- Weight 353 lbs
- Boom Lift Capacity 3000 lbs
- Rotator Rating 6750 lbs
- 360° Continuous Hydraulic
- Grapple Opening 3" - 48"
- Grapple Cylinder clamp force 9400 lbs
- Recommended 25-65 HP
- Hydraulic Flow 5- 10 gpm
- Hydraulic Pressure 3000 psi

LXG 320R



LXG 330R

(72")

- Category II & III 3PH Mount
- Dimensions 68" x 76" x 67"
- Weight 888 lbs
- Boom Lift Capacity 4500 lbs
- Rotator Rating 9000 lbs
- 360° Continuous Hydraulic
- Grapple Opening 3" - 72"
- Grapple Cylinder clamp force 21000 lbs
- Recommended 60-180 HP
- Hydraulic Flow 5- 10 gpm
- Hydraulic Pressure 3000 psi

LXG 330R



LXG 330RP

(72")

- Category II & III 3PH Mount
- Dimensions 68" x 76" x 70"
- Weight 1229 lbs
- Boom Lift Capacity: Retracted 4500 lbs
- Extended 3000 lbs
- LXG 330RP
- Rotator Rating 9000 lbs
- 360° Continuous Hydraulic
- Grapple Opening 3" - 72"
- Grapple Cylinder clamp force 21000 lbs
- Recommended 60-180 HP
- Hydraulic Flow 10- 20 gpm
- Hydraulic Pressure 3000 psi

LXG 330RP



**TIMBER
TALON**

LXG420R

LXG400 SERIES SKIDSTEER

GRAPPLE OPENING

 48"-72"

When you need to load, transport and stack logs smoothly and quickly at the sawmill, look no further than Wallenstein's Skidsteer log grapples. Mounted directly to your skidsteer, these heavy-duty grapples give you total control from inside the cab to pick up and move logs with incredible agility.

SPRING CENTERED SERIES



LXG 420S

- Standard Skid Steer Quick attach
- Dimensions 51" x 52" x 44"
- Weight 560 lbs
- Boom Lift Capacity 3000 lbs
- Rotator Rating 6750 lbs
- 180° Lockable Spring return
- Grapple Opening 3"- 48"
- Grapple Cylinder clamp force 9400 lbs
- Recommended 30-70 HP
- Hydraulic Flow 5- 10 gpm
- Hydraulic Pressure 3000 psi

LXG 420S

48"



LXG 430S

- Standard Skid Steer Quick attach
- Dimensions 69" x 76" x 53"
- Weight 1050 lbs
- Boom Lift Capacity 4500 lbs
- Rotator Rating 9000 lbs
- 180° Lockable Spring return
- Grapple Opening 3"- 72"
- Grapple Cylinder clamp force 21000 lbs
- Recommended 70-100 HP
- Hydraulic Flow 5- 10 gpm
- Hydraulic Pressure 3000 psi

LXG 430S

72"



BYPASS GRAPPLE

Grapple tines fold together as tight as 3 inches, ensuring easy handling of smaller logs and branches.



360 DEGREE HYDRAULIC ROTATOR

Pick up logs in any position and move them exactly where you want with the 360 degree hydraulic rotator. LX420R, LX430R and LX430RP only.



SPRING-CENTERED GRAPPLE WITH LOCKING POSITIONS

The grapple twists when turning corners but stays straight when grabbing logs. Includes lateral and in-line lock positions. LX420S & LX430S only.



CANTILEVER CRADLE

Leverage and secure your load with the serrated cradle when lifting logs in-line.



PUSH BAR

Made with AR400 steel, applies pressure against the tree allowing operators to safely guide the tree as it falls. LXG430 series only.



INTEGRATED FAIRLEAD

Provides a tangle-free entry point for the winch rope, keeping it organized and away from the grapple. LXG430RP only.



EXTENDABLE BOOM

The 24" extendable boom allows your tractor to reach logs off-trail or between stumps. LXG430RP only.



9,000 LB WARN WINCH

Keep your tractor on-trail and retrieve logs deep in the woodlot with available Warn Winch. LXG430RP only.

100-FOOT SYNTHETIC ROPE

Haul logs safely out of the woods with 100 feet of non-coiling synthetic rope. LXG430RP only.

HYDRAULIC ROTATOR SERIES

PROFESSIONAL SERIES



LXG 420R

(48")

- Standard Skid Steer Quick attach
- Dimensions 51" x 52" x 47"
- Weight 588 lbs
- Boom Lift Capacity 3000 lbs
- Rotator Rating 6750 lbs
- 360° Continuous Hydraulic
- Grapple Opening 3" - 48"
- Grapple Cylinder clamp force 9400 lbs
- Recommended 30-70 HP
- Hydraulic Flow 5- 10 gpm
- Hydraulic Pressure 3000 psi

LXG 420R



LXG 430R

(72")

- Standard Skid Steer Quick attach
- Dimensions 67" x 76" x 67"
- Weight 1124 lbs
- Boom Lift Capacity 4500 lbs
- Rotator Rating 9000 lbs
- 360° Continuous Hydraulic
- Grapple Opening 3" - 72"
- Grapple Cylinder clamp force 21000 lbs
- Recommended 70-100 HP
- Hydraulic Flow 5- 10 gpm
- Hydraulic Pressure 3000 psi

LXG 430R



LXG 430RP

(72")

- Standard Skid Steer Quick attach
- Dimensions 67" x 76" x 70"
- Weight 1444 lbs
- Boom Lift Capacity: Retracted 4500 lbs, Extended 3000 lbs
- LXG 430RP
- Rotator Rating 9000 lbs
- 360° Continuous Hydraulic
- Grapple Opening 3" - 72"
- Grapple Cylinder clamp force 21000 lbs
- Recommended 70-100 HP
- Hydraulic Flow 10- 20 gpm
- Hydraulic Pressure 3000 psi

**TIMBER
TALON**

LXG 200

SERIES MINI SKIDSTEER

GRAPPLE OPENING

40"

Squeeze into tight spaces and get the job done efficiently with Wallenstein's new Mini Skidsteer Log Grapple, the ideal attachment for landscapers and tree service contractors who need hauling strength through narrow passages.

The LXG210S features a spring-centered return that twists when turning corners but stays straight when grabbing logs, a tight grapple closure for small branches, and lateral or in-line grapple positioning for smooth log handling.

SPRING CENTERED SERIES



LXG 210S

40"

- Mini Skidsteer Mount
- Dimensions 47" x 44" x 40"
- Weight 285 lbs
- Boom Lift Capacity 1000 lbs
- Rotator Rating 6750 lbs
- LXG 210S
- 180° Lockable Spring return
- Grapple Opening 3" - 38"
- Grapple Cylinder clamp force 9400 lbs
- Recommended 20-40 HP
- Hydraulic Flow 4- 10 gpm
- Hydraulic Pressure 3000 psi

COLOURS



LXG210S is designed to fit the universal attachment plate of the following make of Mini Skidsteers only: Toro, Vermeer, Ramrod, Boxer and Ditch Witch.

If you have any questions concerning a particular model fit, please contact your Dealer or Wallenstein.



BYPASS GRAPPLE

Grapple tines fold together as tight as 3 inches, ensuring easy handling of smaller logs and branches.



SPRING-CENTERED GRAPPLE WITH LOCKING POSITIONS

The grapple twists when turning corners but stays straight when grabbing logs. Includes lateral and in-line lock positions.



CANTILEVER CRADLE

Leverage and secure your load with the serrated cradle when lifting logs in-line.



MX130

WALLENSTEIN



MANURE SPREADER

PTO DRIVE

GROUND DRIVE

MANURE SPREADERS

A STABLE INVESTMENT.

Wallenstein compact manure spreaders let you quickly take care of business so you can get back to the fun part of owning horses. Choose from various models to best fit your tractor and stable.





MX80P

BETTER CONTROL, BETTER RESULTS

TURNING WASTE INTO A VALUABLE RESOURCE THAT IS EASY TO MANAGE

Healthy fields and pastures are the result of careful and proven practices that give your horses healthy grasses to eat season after season. Fertilization plays a critical part in maintaining strong plant roots promoting quick growth and durability against drought. The manure produced by horses and livestock is an excellent resource that gives nutrients back to the soil. With a little extra care and precision, using manure as fertilizer pays dividends to estate owners looking to turn seemingly waste into a cost effective pasture program, giving your horses and animals better grass for grazing or baling.



A fine spread speeds nutrients to the soil preventing dead spots while maintaining your pasture's pristine appearance.



LOAD AND GO

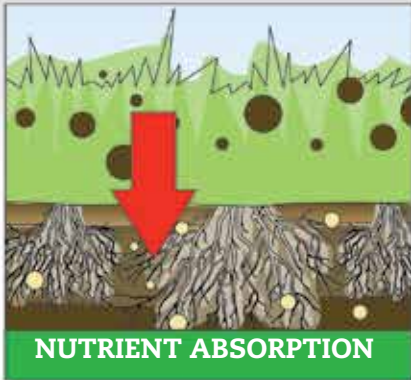
Wallenstein MX Spreaders are built ready. Easy operation means just load and go.

A FINER SPREAD...

- Accelerates pasture recovery, making it usable for grazing sooner.
- Maintains pasture appearance by blending in with the grass.
- Provides even coverage - no clumping, no missed spots.
- Dries faster, reducing odor.



INTEGRATION & GROWTH



Manure is full of nutrients that help plants and grasses thrive when controlled properly. Nutrients are absorbed into the soil, reaching plant roots and boosting growth while strengthening the root system.



EASY TO MANAGE & COST EFFECTIVE



Using manure as fertilizer reduces your removal costs, including container bin rental and shipping. From stall to pasture, manure is part of an ongoing cycle of healthy growth.

BOOST YOUR GARDEN'S YIELD

COMPACT ENOUGH FOR YOUR LARGE GARDEN

A BEAUTIFUL RESOURCE

Turn piles of manure into a valuable resource for your garden. Increase the yields of your garden by enriching the soil. Returning nutrients to the soil after a growing season revitalizes the land and prepares it for another year.



FINELY TUNED FOR FINE RESULTS

GIVING YOU CONTROL FOR PRECISE HANDLING AND SPREADING

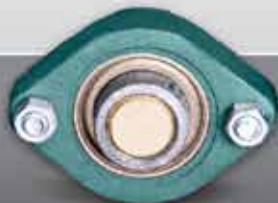
BUILT FOR MATERIAL HANDLING

HEAVY DUTY, LONG-LASTING CONSTRUCTION



CHASSIS/FRAME

Heavy loads, rough terrain and towing forces are easily managed with the strength and support of the MX spreader's frame. The trailer tongue, axle assembly and beaters rely on the rigidity of the frame which prevents the box from premature wearing and cracking.



HEAVY DUTY BEARINGS

Heavy duty bearings are standard for smooth operation and longer life reducing wear and tear.

MADE TO LAST

POWDER COATED PAINT

Powder coated paint provides extra strength and durability against the highly corrosive nature of manure.

POLY FLOOR BOARDS

Tongue-and-groove poly floor boards will not rust or rot, and are easy to clean.



See details on page 84

Wallenstein 2017 Product Catalogue

LET US MATCH YOUR TRACTOR

MANY COLORS AVAILABLE

All models of the MX Compact Manure Spreader are available in your choice of color.



*Colors may not be exactly as shown



OPTIONAL ENDGATE

The optional endgate is the ultimate way to control delivery. Close the endgate to eliminate spills during filling or on the way from stable to pasture. Easily open the endgate when you are ready to spread.

Additionally, closing the endgate transforms the spreader to a fully functional utility holding trailer for all of your yard needs.

DESIGNED TO IMPROVE SPREADING



Shown with shields removed

APRON CHAIN SPEED ADJUST

Neutral, slow, medium or fast gives you the control to spread in a manner that suits your acreage.



APRON CHAIN TENSIONER

The apron chain tensioner keeps the required tension on the apron chain with this easily accessible adjustment, extending the system's life cycle.



BEATER PADDLES

The right paddle design gives the MX Series spreaders the advantage for a finer spread, greatly reducing the delivery of large clumps with the dual ability to rip and shred evenly.



OPTIONAL FINES PAN

The optional fines pan is a great way to ensure larger chunks remain exposed to the beaters longer, breaking them into fine components.





GROUND DRIVE

FOR VEHICLES WITHOUT PTO CAPABILITIES



MX 25

- 25 Bushel Heaped Capacity (31.25 cu.ft.)
- 15-25 Recommended HP
- Ground Drive
- 6 x 12/5 Tires/Bolts
- 8 Paddles
- 510 Lbs. Total Weight W/Tires
- 34 Lbs. Tongue Weight
- Box Dim. (LxWxH) 72" x 26" x 15"
- Dim. (LxWxH) 117" x 48" x 29"

MX 25



MX 50G

- 50 Bushel Heaped Capacity (62.5 cu.ft.)
- 15-30 Recommended HP
- Ground Drive
- 7.6 x 15/5 Tires/Bolts
- 10 Paddles
- 795 Lbs. Total Weight W/Tires
- 50 Lbs. Tongue Weight
- Box Dim. (LxWxH) 89" x 32" x 17"
- Dim. (LxWxH) 156" x 57" x 35.5"

MX 50G



MX 80G

- 80 Bushel Heaped Capacity (100 cu.ft.)
- 20-45 Recommended HP
- Ground Drive
- 7.6 x 15/5 Tires/Bolts
- 10 Paddles
- 920 Lbs. Total Weight W/Tires
- 56 Lbs. Tongue Weight
- Box Dim. (LxWxH) 102" x 38" x 20"
- Dim. (LxWxH) 168" x 63" x 37"

MX 80G



GROUND DRIVE MX
Manure Spreaders offer simplicity and reliability for applications where a PTO doesn't exist. Offering a full size range, MX ground drive units can be used with vehicles such as: ATV's, UTV's or even lawn tractors. Traction implement tires are standard on GROUND DRIVE units to ensure the torque is there for a fine, consistent spread.

See details on page 84

Wallenstein 2017 Product Catalogue



PTO DRIVE FOR TRACTORS WITH PTO POWER



MX 50P

- 50 Bushel Heaped Capacity (62.5 cu.ft.)
- 18-30 Recommended HP
- PTO Drive
- 7.6 x 15/5 Tires/Bolts
- 10 Paddles
- 795 Lbs. Total Weight W/Tires
- 50 Lbs. Tongue Weight
- Box Dim. (LxWxH) 89" x 32" x 17"
- Dim. (LxWxH) 156" x 57" x 35.5"

MX 50P



MX 80P

- 80 Bushel Heaped Capacity (100 cu.ft.)
- 25-45 Recommended HP
- PTO Drive
- 7.6 x 15/5 Tires/Bolts
- 10 Paddles
- 920 Lbs. Total Weight W/Tires
- 56 Lbs. Tongue Weight
- Box Dim. (LxWxH) 102" x 38" x 20"
- Dim. (LxWxH) 168" x 63" x 37"

MX 80P



PTO DRIVE MX Manure Spreaders offer increased power and spreading consistency combined with ease of use. PTO DRIVE model's harness the power of your tractor to deliver capacities of 50, 80 & 130 bushels to your field. Connected by belt and pulley, the driveshaft and gear box deliver efficient power to the beaters.



See details on page 84



PTO DRIVE HIGH CAPACITY

Standard Features



Replaceable Paddles
(Bottom feeder only)



Heavy Duty Apron Chain



130 Bushel Heaped Capacity



One-Piece Cor-Ten Box Side
(high corrosion resistance)



Easy Access Chain Tensioner



Multi-Step Paint Process
(Undercoat, powder coat, corten steel)



Hydraulic Hose Keeper
(Stores hose ends when not in use)



Beater Speed Control
(Clean out, high, low, off)

See details on page 84

Wallenstein 2017 Product Catalogue



MX130

FOR TRACTORS WITH PTO POWER

Optional Features



Fines Pan



End Gate



Upper Beater



Larger Retread Tires



Shown with optional end gate and upper beater



MX 130

- 130 Bushel Heaped Capacity (162.5 cu.ft.)
- 45-75 Recommended HP
- PTO Drive
- 11L-15SL/6 Tires/Bolts
- 10 Replaceable Paddles
- 2180 Lbs. (est) Total Weight W/Tires
- 330 Lbs. (est) Tongue Weight
- Box Dim. (LxWxH) 130" x 48" x 23"
- Dim. (LxWxH) 214" x 79" x 42"

MX 130

MX 130T

- 11R22.5/8 Retread Tires/Bolts
- 130 Bushel Heaped Capacity (162.5 cu.ft.)
- 45-75 Recommended HP
- PTO Drive
- 10 Replaceable Paddles
- 2500 Lbs. Total Weight W/Tires
- 330 (est) Lbs. Tongue Weight
- Box Dim. (LxWxH) 130" x 48" x 23"
- Dim. (LxWxH) 214" x 90" x 48"

MX 130T

- 130T Model features large diameter retread tire designed for bigger tractors and smoother towing/spreading. Low cost replacement using retreads

Manure Spreader Options

Jack Stands



Part#	Description
Z91513	<ul style="list-style-type: none"> Flat bottom jack (MX25) standard on other models

Fines Pans

Dealer Installed



Part#	Description
M7550	<ul style="list-style-type: none"> MX25
M7590	<ul style="list-style-type: none"> MX80G SN# A0596023 and up MX80P SN# A0597011 and up
M7610	<ul style="list-style-type: none"> MX50P (all serial numbers) MX50G SN# B07920001 and up
M7620	<ul style="list-style-type: none"> Fits MX130 & MX130T Hydraulically Controlled Requires 1-3gpm. Includes Hydraulic Hoses

End Gates

Dealer Installed



Part#	Description
M7570	<ul style="list-style-type: none"> MX50P (all serial numbers) MX50G SN# B07920001 and up
M7580	<ul style="list-style-type: none"> MX80G SN# A0596023 and up MX80P SN# A0597011 and up
M7630	<ul style="list-style-type: none"> Fits MX130 & MX130T Hydraulically Controlled Requires 1-3gpm. Includes Hydraulic Hoses

Upper Beater

Dealer Installed



Part#	Description
M7640	<ul style="list-style-type: none"> MX130 (all serial numbers) MX130T (all serial numbers)

Colour Options



When ordering, please use 3 letter colour designation behind models

*Options only available in black





WALLENSTEIN

RANCHHO

AXGE

TRACTOR

SKIDSTEER

THUMB ATTACHMENTS

BREAK GROUND, NOT YOUR BACK

When it comes to landscaping and excavating, start the job right with the Wallenstein Ranchho, the backhoe attachment that digs deeper and reaches further.





WALLENSTEIN

RANCHHO

GE 605

TRACTORS 18-28 HP



GE 605

- 18-28 Recommended Tractor HP
- 6' 4" Digging Depth
- 8.5" Ground Clearance
- 180 degrees Bucket Rotation
- 150 degree Swing Arc
- 100" Reach from Post Swing
- 2" Swing Cylinder Diameter
- 2.25" Dipper Cylinder Diameter
- 500 lbs Shipping Weight

GE 605



GE605
100" reach,
150° swing arc



The GE 605 is
designed for
18 - 28 HP tractors.



**Pick A Colour
To Match Your
Tractor**



SUBFRAME MOUNTING

The model specific subframe system absorbs the stress of heavy lifting. For a list of available applications visit wallensteinequipment.com.



**GREASABLE
PINS**

OPTIONAL FEATURES



OPERATOR'S SEAT
Optional on GE605 only



BACKHOE THUMB



**HYDRAULIC POWER
PACK**



**RUBBER STABILIZER
PADS**

BACKHOES

MOUNTING OPTIONS



SUBFRAME MOUNTING

The model specific subframe system absorbs the stress of heavy lifting. For a list of available applications visit wallensteinequipment.com.

WALLENSTEIN

RANCHHO



FEATURES

THUMBS

Thumbs are ideal for moving heavy objects and gathering awkward debris such as scrap wood and concrete chunks that don't easily fit into a bucket.



HYDRAULIC THUMB

The most flexible way to grab hold of different sized objects and place them where you want them. (Available on 720/920 only, n/a on 920XT)



MECHANICAL THUMB

Attaches to the stick and has 5 different pin positions. (Available on all models except 920XT)



PICK A COLOUR



CURVED BOOM

Dig deep without impacting the edge of the excavation. The curved boom protects the backhoe from unnecessary damage and prevents ground from falling back into the hole.



HYDRAULIC POWER PACK

The optional self-contained PTO pump kit provides hydraulic power for tractors without available auxiliary power.



GREASABLE PINS



3-POINT HITCH

Turn your tractor into a backhoe with the simple 3-point hitch mount. The 3-point hitch also utilizes your tractor's draw bar for increased rigidity.



SKIDSTEER & MINI SKIDSTEER MOUNT

The universal skidsteer mount connects easily to most skidsteers. The model-specific tieback kit ties the backhoe to the skidsteer or mini skidsteer, relieving stress on the bucket cylinders. Visit wallensteinequipment.com for a list of available tieback applications.

Designed for sub compact, compact, utility tractors, and skidsteers, the Ranchho gives you precision and power at your fingertips. The versatile curved-boom backhoe attachment that fits your tractor and your property. The Ranchho is a rugged backhoe that's ready to sink its teeth into any task you give it, from landscaping to concrete footings.



DETACH



ATTACH

QUICK ATTACH BUCKET ADAPTER

Switch attachments quickly and easily with only one bolt and no hammering of pins.



BUSHINGS

Hardened steel bushings are installed on all the main pivot points of the GX720 and GX920 for reduced wear and tear.



VERTICAL STABILIZERS

Dig closer to buildings and foundations with the optional hydraulic vertical stabilizers. Available for GX720, GX920, GX920XT.



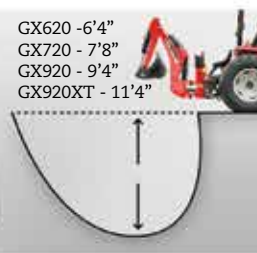
CONTROLS

Start digging with the easy-to-use four-way joystick-style levers.



DUAL CYLINDER BOOM PIVOT

Dual cylinders provide strong, consistent movement throughout the entire 180-degree swing range.



SWING CUSHIONING

Swinging the boom is controlled by cushioning hydraulic cylinders that reduce machine shake by slowing the boom as it reaches the furthest ends of the swing range.



620

720

TRACTORS 18-60 HP
SKIDSTEER 30-60 HP



GX 620

- 6 ft Digging Depth
- 100" Reach from Post Swing
- Tractors with 18-30 HP
- 385 lbs Lift Capacity
- 180 Degree Swing Arc
- 2.25" Swing Cylinder Diameter
- 2.25" Dipper Cylinder Diameter
- 575 lbs Shipping Weight

GX 620



GX 720

- 7 ft Digging Depth
- 123" Reach from Post Swing
- Tractors with 30-60 HP
- 925 lbs Lift Capacity
- 180 Degree Swing Arc
- 2.5" Swing Cylinder Diameter
- 2.5" Dipper Cylinder Diameter
- 765 lbs Shipping Weight

GX 720



WALLENSTEIN
RANCHHO



920

920XT

TRACTORS 30-100 HP
 SKIDSTEER 30-100 HP

**GX 920**

- 9 ft 4 inch Digging Depth
- 141" Reach from Post Swing
- Tractors with 45-100 HP
- 750 lbs Lift Capacity
- 180 Degree Swing Arc
- 2.5" Swing Cylinder Diameter
- 2.5" Dipper Cylinder Diameter
- 791 lbs Shipping Weight

GX 920

**GX 920XT**

- 11 ft 4 inch Digging Depth
- 164" Reach from Post Swing
- Tractors with 45-100 HP
- 580 lbs Lift Capacity (Extended)
- 710 lbs Lift Capacity (Normal)
- 180 Degree Swing Arc
- 2.5" Swing Cylinder Diameter
- 2.5" Dipper Cylinder Diameter
- 980 lbs Shipping Weight

GX 920XT



WALLENSTEIN
RANCHHO

QC620



QC 620

- 6 ft inch Digging Depth
- Includes Flat Faced Couplers
- Quick Attach Skidsteer Mount
- 375 lbs Shipping Weight

QC 620

When you need to get down to work, start digging with the Ranchho QC620. This skidsteer-mounted backhoe is a single-stick that reaches 6-feet deep and is controlled from inside the cab. The QC620 keeps you trenching without the need of continually repositioning.

* in accordance with SAE J1179 standard

BACKHOES

Wallenstein 2017 Product Catalogue

HOW TO CONFIGURE AND PRICE YOUR BACKHOE

There are three steps to configuring your backhoe. Picking a backhoe, mount and bucket.

Step 1. Choose Model



GE605



GX620



GX720



GX920



GX920XT

Step 2. Choose Mount

Tractor Mounts

SubFrame Kit



Recommended

Part#	Description
-------	-------------

SubFrame list visit wallensteinequipment.com	
--------------------------------------------------------------------------------------------	--

Subframe provides the strongest way to properly and safely distribute the stress produced by a backhoe attachment. For a list of available subframes visit wallensteinequipment.com. If your tractor is not on the list please talk to your dealer for options. Some tractor / subframe combinations may require wheel spacers. Wheel spacers are not available from Wallenstein and are added at the customers expense. Contact factory for substitutions to recommended backhoe sizes. Note: subframes are not midmount mower compatible unless specified on the subframe list.

3 Point Hitch Mount



Part#	Description
-------	-------------

- | | |
|--------------|---------------------------------------------------------------------------------------------------------------------------------------------------------------------------------------------------------------------------|
| PT300 | <ul style="list-style-type: none"> Fits all models except GE605 3 Point hitch CAT I: for older low HP tractors equipped with CAT I 3PH for which there is no sub frame available, lite duty only. |
| PT322 | <ul style="list-style-type: none"> Fits GX700, GX720, GX900, GX920/GX920XT 3 Point hitch CAT II: for tractors above 100hp that do not require a subframe |

Although a subframe is recommended certain tractors may not require a subframe. Contact your dealer to inquire about your specific model.

Backhoe Options

Backhoe Thumbs

Part#	Description
BT5250	<ul style="list-style-type: none"> Weld on mechanical thumb Universal Fit
BT5260	<ul style="list-style-type: none"> Clamp on mechanical thumb BX22, BX23, BX24, BX25 Kubota
BT5280	<ul style="list-style-type: none"> Clamp on mechanical thumb GE605 & GX620
BT5290	<ul style="list-style-type: none"> Clamp on mechanical thumb GX720/GX920/GX920XT
BT5300	<ul style="list-style-type: none"> Hydraulic thumb kit Factory install only GX720/GX920
BT5310	<ul style="list-style-type: none"> Clamp on mechanical thumb QC620

Part#	Description
BT5320	<ul style="list-style-type: none"> Clamp on mechanical thumb Kioti 2475/2485 backhoes
BT5330	<ul style="list-style-type: none"> Clamp on mechanical thumb GX920XT
BT5340	<ul style="list-style-type: none"> John Deere 260 Backhoe
BT5350	<ul style="list-style-type: none"> Massey CB-05 Backhoe

Hydraulic Accessories

Part#	Description
Z51920	<ul style="list-style-type: none"> Female flat faced coupler Fits most skidsteers
Z51919	<ul style="list-style-type: none"> Male flat faced coupler Fits most skidsteers
Z56918	<ul style="list-style-type: none"> Power Beyond Sleeve Used to power an accessory downstream of a control valve

Backhoe Closed Centre Kits. Serial number specific: Call Wallenstein for details or download "Wallenstein Spec Book" available online.

Step 3. Choose Bucket(s)

Skidsteer Mount

Universal Mounting Plate

Part#	Description
SQ500	<ul style="list-style-type: none"> • Quick attach mount • 44" wide • Includes flat faced couplers • requires tie back kit



Tieback Kit



Part#	Description
Tieback list visit wallensteinequipment.com	

Mini Skidsteer Mount

Tieback Kit & Mounting Plate

Part#	Description
Tieback list visit wallensteinequipment.com	

Skidsteers and Mini Skid Steers require a tieback kit with the quick attach to properly and safely distribute the stress produced by a backhoe attachment. For a list of available tieback kits visit wallensteinequipment.com. If your skidsteer is not on the list please talk to your dealer for options. Contact factory for substitutions to recommended backhoe sizes.

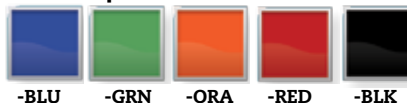
Bucket		GE605	GX620	GX720	GX920	GX920XT	QC620
Part #	Description						
BK2609	<ul style="list-style-type: none"> • 9" Bucket • 3 teeth • Bucket Volume: 0.5115 cubic ft 	✓	✓				
BK2612	<ul style="list-style-type: none"> • 12" Bucket • 3 teeth • Bucket Volume: 0.6934 cubic ft 	✓	✓				
BK2615	<ul style="list-style-type: none"> • 15" Bucket • 4 teeth • Bucket Volume: 0.8749 cubic ft 	✓	✓				
BK2618	<ul style="list-style-type: none"> • 18" Bucket • 4 teeth • Bucket Volume: 1.0567 cubic ft 	✓	✓				
BK2900	<ul style="list-style-type: none"> • 9" Bucket • 3 teeth • Bucket Volume: 0.8416 cubic ft 			✓	✓	✓	✓
BK2120	<ul style="list-style-type: none"> • 12" Bucket • 3 teeth • Bucket Volume: 1.1694 cubic ft 			✓	✓	✓	✓
BK2150	<ul style="list-style-type: none"> • 15" Bucket • 4 teeth • Bucket Volume: 1.4806 cubic ft 			✓	✓	✓	✓
BK2180	<ul style="list-style-type: none"> • 18" Bucket • 4 teeth • Bucket Volume: 1.7912 cubic ft 			✓	✓	✓	✓
BK2240	<ul style="list-style-type: none"> • 24" Bucket • 5 teeth • Bucket Volume: 2.413 cubic ft 			✓	✓	✓	✓
BK2240D	<ul style="list-style-type: none"> • 24" Ditching Bucket • No teeth • Bucket Volume: 2.413 cubic ft 			✓	✓	✓	✓

Accessories

Part#	Description
BT7220	<ul style="list-style-type: none"> • Quick change bucket adapter • GX720, GX920, GX920XT • 2 pins required for each additional bucket
3012M209	<ul style="list-style-type: none"> • support BT7220 • 2 pins required with every additional bucket
BT7230	<ul style="list-style-type: none"> • Ripper Tooth • GX720, GX920/GX920XT
BT7240	<ul style="list-style-type: none"> • Vertical Stabilizer Kit • GX720, GX920, GX920XT
BT7250	<ul style="list-style-type: none"> • Operator's Seat, GE605
BP220	<ul style="list-style-type: none"> • Street Pad Kit • GE605

Part#	Description
BP210	<ul style="list-style-type: none"> • Street Pad Kit • GX620
BP230	<ul style="list-style-type: none"> • Street Pad Kit • GX720, GX920/GX920XT

Colour Options



Options available in black only.
When ordering, please use 3 letter colour designation behind models

PTO Pump Kits

Part#	Description
PTO605	<ul style="list-style-type: none"> • PTO Hydraulic Pump Kit 5GPM • GE605
PTO62	<ul style="list-style-type: none"> • PTO Hydraulic Pump Kit 7GPM • GX620
PTO72	<ul style="list-style-type: none"> • PTO Hydraulic Pump Kit 7GPM • GX720, GX920/GX920XT



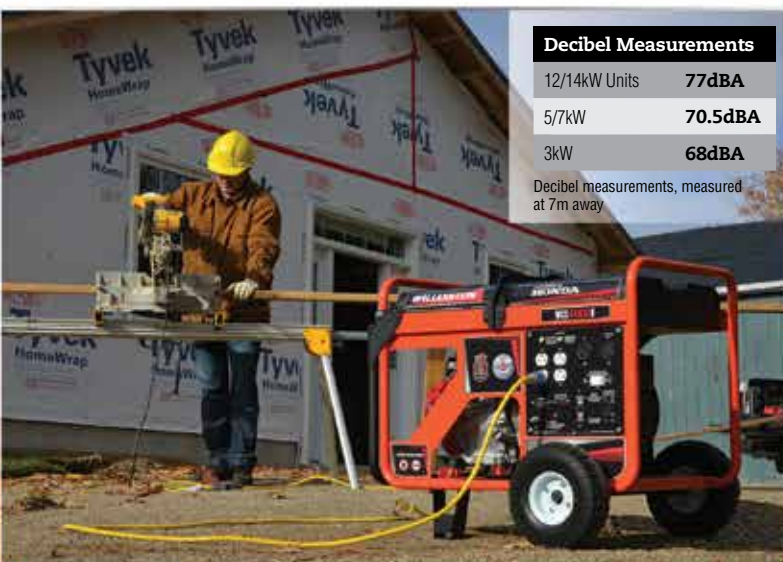
GENERATORS & WELDERS

GAS & DIESEL MODELS

ALL NEW
power
LINE-UP

Engineered and designed for reliable performance, Wallenstein's new lineup of gas and diesel generators offer a wide range of power wattages for emergency power and contractor-ready applications.





Decibel Measurements

12/14kW Units	77dBA
5/7kW	70.5dBA
3kW	68dBA

Decibel measurements, measured at 7m away



JOBSITE RATED SERIES

Full GFCI Protection



BACKUP POWER SERIES

Sump Pump Friendly



Auto Voltage Regulation (AVR)

Available AVR allows you to power sensitive electronics such as laptop computers.



High Capacity Fuel Tank

Higher fuel capacity means a longer run time.



Full Power Switch*

Turning on the full power feature utilizes the secondary winding of the alternator to increase the power capacity of the 120v side. (240 is disabled)

*Only on S5000/7000 models



Rubber Tires

Most models come standard with rubber tires and folding handle bar, allowing for easy transportation of your generator.



Sky Hook

Bolted right to the frame, these strong sky hooks allow for easy lifting of generator on job sites. (Selected models)

2400 MAX WATTS

UP TO

13900 MAX WATTS



Enjoy 5 years of worry free operation with Wallenstein.

For details, visit wallensteinequipment.com.



COLOUR OPTIONS



POWERED by HONDA™

You need the confidence that your generator will start when it really matters. All Wallenstein gas generators are built using quality components and are powered by Honda, the most trusted name in engines.



BACKUP POWER SERIES



Sump Pump Ready

When bad weather strikes, don't be left in the dark. Be confident with Wallenstein's reliable lineup of emergency backup generators, built in Canada and powered by Honda engines.



WHS 3000/WHS 3000R

- 160CC Honda GX160 Engine
- 2500 Max. Watts / 2100 Continuous Watts (WHS 3000)
- 2500 Max. Watts / 2100 Continuous Watts (WHS 3000R)
- 18.75 Continuous Amps
- 120 volt
- 18 L Fuel Capacity
- Recoil Start
- Run Time: Half Load - 16.6 Hours
- Run Time: Full Load - 12.5 Hours
- Auto Voltage Regulation (AVR) (WHS3000R)
- 144 lbs Weight

WHS3000

WHS3000R



WHS 5000/WHS 5000R

- 270CC Honda GX270 Engine
- 5000 Max. Watts / 4250 Continuous Watts (WHS 5000)
- 4600 Max. Watts / 4250 Continuous Watts (WHS 5000R)
- 17.75/35.5 Continuous Amps (240/120)
- 120/240 volt
- 26 L Fuel Capacity
- Recoil Start
- Auto Idle
- Full Power Switch
- Run Time: Half Load - 12.3 Hours
- Run Time: Full Load - 7.1 Hours
- Auto Voltage Regulation (AVR) (WHS5000R)
- 205 lbs Weight

WHS5000

WHS5000R



WHC 2500

- 160CC Honda GC160 Engine
- 2400 Max. Watts / 2000 Continuous Watts
- 16.5 Continuous Amps
- 120 volt
- 1.8 L Fuel Capacity
- Recoil Start
- Run Time: Half Load - 1.75 Hours
- Run Time: Full Load - 1.5 Hours
- 71 lbs Weight

WHC2500

Optional Wheel Kits
Fit All Models
WK210 - 10" Tires
WK214 - 14" Tires



WHC 3000

- 160CC Honda GX160 Engine
- 2500 Max. Watts / 2100 Continuous Watts
- 18.75 Continuous Amps
- 120 volt
- 3.1 L Fuel Capacity
- Recoil Start
- Run Time: Half Load - 3 Hours
- Run Time: Full Load - 2.5 Hours
- 80 lbs Weight

WHC3000



WHC 5000

- 270CC Honda GX270 Engine
- 5000 Max. Watts / 4250 Continuous Watts
- 17.75/35.5 Continuous Amps (120/240)
- 120v/240v
- 5.3 L Fuel Capacity
- Recoil Start
- Run Time: Half Load - 4 Hours
- Run Time: Full Load - 3 Hours
- 118 lbs Weight

WHC5000

See details on page 102

POWERED by
HONDA™



WHS 7000/WHS 7000R

- 389CC Honda GX390 Engine
- 6500 Max. Watts / 6250 Continuous Watts (WHS 700)
- 6700 Max. Watts / 6250 Continuous Watts (WHS 700R)
- 26/52 Continuous Amps (240/120)
- 120/240 volt
- 26 L Fuel Capacity
- Electric Start*
- Auto Idle
- Full Power Switch
- Run Time: Half Load - 12.4 Hours
- Run Time: Full Load - 7.2 Hours
- Auto Voltage Regulation (AVR) (WHS7000R)
- 270 lbs Weight

*Z93201 250 CCA battery not included

WHS7000

WHS7000R



WHS 12000/WHS 12000R

- Honda GX630 689 CC Engine
- 12000 Max. Watts / 10000 Continuous Watts (WHS 12000)
- 12700 Max. Watts / 10000 Continuous Watts (WHS 12000R)
- 42/84 Continuous Amps (240/120)
- 120/240 volt
- 46 L Fuel Capacity
- Electric Start
- Auto Idle
- Run Time: Half Load - 10.2 Hours
- Run Time: Full Load - 6.8 Hours
- Auto Voltage Regulation (AVR) (WHS12000R)
- 407 lbs Weight

*Z93201 250 CCA battery not included

WHS12000

WHS12000R



WHS 14000/WHS 14000R

- Honda GX690 689 CC Engine
- 12800 Max. Watts / 12000 Continuous Watts (WHS 14000)
- 13900 Max. Watts / 12000 Continuous Watts (WHS 14000R)
- 50/100 Continuous Amps (240/120)
- 120/240 volt
- 46 L Fuel Capacity
- Electric Start
- Auto Idle
- Run Time: Half Load - 8.6 Hours
- Run Time: Full Load - 5.7 Hours
- Auto Voltage Regulation (AVR) (WHS14000R)
- 427 lbs Weight

*Z93201 250 CCA battery not included

WHS14000

WHS14000R



JOBSITE RATED SERIES



Full GFCI Protection

Trust Wallenstein to keep your jobsite powered up. Our wide range of contractor grade generators include GFCI protected panels.



WCS 3000/WCS 3000R

- 1600CC Honda GX160 Engine
- 2500 Max. Watts/2100 Continuous Watts (WCS 3000)
- 2500 Max. Watts/2100 Continuous Watts (WCS 3000R)
- 18.5 Continuous Amps
- 120 volt
- 18 L Fuel Capacity
- Recoil Start
- Full Panel GFCI
- Run Time: Half Load - 16.6 Hours
- Run Time: Full Load - 12.5 Hours
- Auto Voltage Regulation (AVR) (WCS3000R)
- 144 lbs Weight

WCS3000

WCS3000R



WCS 5000/WCS 5000R

- 2700CC Honda GX270 Engine
- 5000 Max. Watts/4250 Continuous Watts (WCS 5000)
- 4600 Max. Watts/4250 Continuous Watts (WCS 5000R)
- 17.75/35.5 Continuous Amps (240/120)
- 120/240 volt
- 26 L Fuel Capacity
- Recoil Start
- Auto-Idle
- Full Power Switch
- Full Panel GFCI
- Run Time: Half Load - 12.3 Hours
- Run Time: Full Load - 7.1 Hours
- Auto Voltage Regulation (AVR) (WCS5000R)
- 205 lbs Weight

WCS5000

WCS5000R



WCC 2500

- 160CC Honda GC160 Engine
- 2400 Max. Watts/2000 Continuous Watts
- 16.5 Continuous Amps
- 120 volt
- 1.8 L Fuel Capacity
- Recoil Start
- 4 GFCI Receptacles
- Run Time: Half Load - 1.75 Hours
- Run Time: Full Load - 1.5 Hours
- 71 lbs Weight

WCC2500

Optional Wheel Kits
Fit All Models
WK210 - 10" Tires
WK214 - 14" Tires



WCC 3000

- 160CC Honda GX160 Engine
- 2500 Max. Watts/2100 Continuous Watts
- 18.5 Continuous Amps
- 120 volt
- 3.1 L Fuel Capacity
- Recoil Start
- 4 GFCI Receptacles
- Run Time: Half Load - 3 Hours
- Run Time: Full Load - 2.5 Hours
- 80 lbs Weight

WCC3000



WCC 5000

- 270CC Honda GX270 Engine
- 5000 Max. Watts/4250 Continuous Watts
- 35.5 Continuous Amps (240/120)
- 120 volt
- 5.3 L Fuel Capacity
- Recoil Start
- 4 GFCI Receptacles
- Run Time: Half Load - 4 Hours
- Run Time: Full Load - 3 Hours
- 118 lbs Weight

WCC5000

See details on page 102

POWERED by
HONDA™



WCS 7000/WCS 7000R

- 389CC Honda GX390 Engine
- 6500 Max. Watts/6250 Continuous Watts (WCS 7000)
- 6700 Max. Watts/6250 Continuous Watts (WCS 7000R)
- 26/52 Continuous Amps (240/120)
- 120/240 volt
- 26 L Fuel Capacity
- Electric Start
- Auto-Idle
- Full Power Switch
- Full Panel GFCI
- Run Time: Half Load - 12.4 Hours
- Run Time: Full Load - 7.2 Hours
- Auto Voltage Regulation (AVR) (WCS7000R)
- 270 lbs Weight

*Z93201 250 CCA battery not included

WCS7000

WCS7000R



WCS 12000/WCS 12000R

- Honda GX630 689CC Engine
- 12000 Max. Watts/10000 Continuous Watts (WCS 12000)
- 12700 Max. Watts/10000 Continuous Watts (WCS 12000R)
- 42/84 Continuous Amps (240/120)
- 120/240 volt
- 46 L Fuel Capacity
- Electric Start
- Auto-Idle
- Full Panel GFCI
- Run Time: Half Load - 10.2 Hours
- Run Time: Full Load - 6.8 Hours
- Auto Voltage Regulation (AVR) (WCS12000R)
- 407 lbs Weight

*Z93201 250 CCA battery not included

WCS12000

WCS12000R



WCS 14000/WCS 14000R

- Honda GX690 689CC Engine
- 12800 Max. Watts/12000 Continuous Watts (WCS 14000)
- 13900 Max. Watts/12000 Continuous Watts (WCS 14000R)
- 50/100 Continuous Amps (240/120)
- 120/240 volt
- 46 L Fuel Capacity
- Electric Start
- Auto-Idle
- Full Panel GFCI
- Run Time: Half Load - 8.6 Hours
- Run Time: Full Load - 5.7 Hours
- Auto Voltage Regulation (AVR) (WCS14000R)
- 430 lbs Weight

*Z93201 250 CCA battery not included

WCS14000

WCS14000R

DIESEL POWERED


KOHLER

Kubota

DK5000E

- 349 CC Kohler KD350 Engine
- 5000 Max. Watts / 3750 Continuous Watts
- 31.25/15.6 Continuous Amps (240/120)
- 120v/240v
- 20 L Fuel Capacity
- Electric Start
- Full Power Switch
- Run Time: Half Load - 22 Hours
- Run Time: Full Load - 14 Hours
- 208 lbs Weight

DK5000E

*Z93201 250 CCA battery not included

DK7300E

- 416 CC Kubota OC95-E3 Engine
- 7300 Max. Watts / 6000 Continuous Watts
- 50/25 Continuous Amps (240/120)
- 120v/240v
- 20 L Fuel Capacity
- Electric Start
- Full Power Switch
- Run Time: Half Load - 16 Hours
- Run Time: Full Load - 9 Hours
- 270 lbs Weight

DK7300E

*Z93201 250 CCA battery not included

WELDER GENERATORS



WDC160

Generator Specifications

- Honda GX340 Engine
- 3500 Max. Watts/3000 Continuous Watts
- 24/12 Continuous Amps (240/120)
- 120v/240v
- 6.1 L Fuel Capacity
- Pull start only
- Run Time: Half Load - 4 Hours
- Run Time: Full Load - 3 Hours
- 183 lbs Weight

Welder Specifications

- 160 Maximum Amps
- 50% Duty Cycle
- 25 FT. Cable Length
- Includes Helmet

WDC160

*Z93201 250 CCA battery not included



WDC190E

Generator Specifications

- Honda GX390 Engine
- 3500 Max. Watts/3000 Continuous Watts
- 24/12 Continuous Amps (240/120)
- 120v/240v
- 6.1 L Fuel Capacity
- Electric Start
- Run Time: Half Load - 3.5 Hours
- Run Time: Full Load - 2.75 Hours
- 197 lbs Weight

Welder Specifications

- 190 Maximum Amps
- 50% Duty Cycle
- 25 FT. Cable Length
- Includes Helmet

WDC190E

*Z93201 250 CCA battery not included



WDC190EA

Generator Specifications

- Honda GX390 Engine
- 3500 Max. Watts/3000 Continuous Watts
- 24/12 Continuous Amps (240/120)
- 120v/240v
- 15.5 L Fuel Capacity
- Electric Start
- Auto Idle
- Run Time: Half Load - 12 Hours
- Run Time: Full Load - 7 Hours
- 213 lbs Weight

Welder Specifications

- 190 Maximum Amps
- 50% Duty Cycle
- 25 FT. Cable Length
- Includes Helmet

WDC190EA

*Z93201 250 CCA battery not included

Generator Options



Two Wheel Kit

Part#	Description
WK210	• 10" Tires
WK214	• 14" Tires

Wood Chipper	Page
BX32s	10
BX52s	11
BX52R	12
BX52RI	12
BX72S	11
BX72R	13
BX72RI	13
BX102S	11
BX102R	13
BX102RI	13
BX102RP	13
BX102RPI	13
BXM32	14
BXM42	14
BXH42	15
BXMT3209	16
BXMT3213	16
BXMT4224	16
BXMT4238	16
BXT4213	17
BXT4224	17
BXT6224	17
BXT6238	17
BXTR6438F	19
BXTR6438P	19
BXC34	20
BXMC34S	21
BXMC34B	21

Log Splitter	Page
WE225	27
WE235	27
WX520	29
WX520-L	29
WX520T	29
WX540	29
WX540-L	29
WXR720	31
WXR720-L	31
WXR740	31
WXR740-L	31
WX910	33
WX910-L	33
WX910T	33
WX920	33
WX930	33
WX950	33
WX960	33
WX970	33
WX980	33
WX980-L	33
WX310	35
WX310C	35
WX320	35
WX320C	35
WX330	35
WX330C	35
WX350	35
WX350C	35
WX360	35
WX360C	35
WX370	35
WX370C	35
WX410	37
WX430	37
WX440	37
WX450	37
WX460	37
WX470	37

Processor	Page
WP235	45
WP265	45
WP635	47
WP835	49
WP865	49

Winches	Page
FX35	54
FX66	54
FX85	54
FX85R	54
FX110	55
FX110R	55
FX140	55
FX140R	55

Skidding Plate	Page
FXP30	56
FXP20	56

Log Trailer*	Page
LT30/LX95	67
LT30H/LX95	67
LT30A/LX95P	67
LT30HA/LX95P	67
LT30A/LX95PW	67
LT30HA/LX95PW	67
LT30/LX95W	67
LT30H/LX95W	67
LT60/LX115	67
LT60H/LX115	67
LT60/LX115W	67
LX60H/LX115W	67
L400/LX95	67
L400/LX95W	67
L400/LX115	67
L400/LX115W	67

*power source is required
L101 (fits all models)
L301 (fits LT30/LX95 models)
L601 (fits LT60/LX115 models)

Log Grapples	Page
LXG 320S	70
LXG 330S	70
LXG 320R	71
LXG 330R	71
LXG 330RP	71
LXG 420S	72
LXG 430S	72
LXG 420R	73
LXG 430R	73
LXG 430RP	73
LXG 210S	74

Manure Spreader	Page
MX25	80
MX50G	80
MX80G	80
MX50P	81
MX80P	81
MX130	83
MX130T	83

Backhoe*	Page
GE605	86
GX620	90
GX720	90
GX920	91
GX920XT	91
QC620	92

Generator	Page
WHC2500	99
WHC3000	99
WHC5000	99
WHS3000	98
WHS3000R	98
WHS5000	98
WHS5000R	98
WHS7000	99
WHS7000R	99
WHS12000	101
WHS12000R	101
WHS14000	101
WHS14000R	101
WCC2500	101
WCC3000	101
WCC5000	101
WCS3000	100
WCS3000R	100
WCS5000	100
WCS5000R	100
WCS7000	101
WCS7000R	101
WCS12000	101
WCS12000R	101
WCS14000	101
WCS14000R	101
WDC160	102
WDC190E	102
WDC190EA	102
DK5000E	102
DK7300E	102

*mounting kit and bucket are required

WALLENSTEIN



Manufactured by
EMB MFG Inc.
1-877-695-9283
Tel: (519) 699-9283
Fax: (519) 699-4146
4144 Boomer Line,
St. Clements, ON N0B 2M0
Email: sales@embmfg.com
wallensteinequipment.com



To contact your local Wallenstein Dealer
visit wallensteinequipment.com